



HUBO CATALOGUE



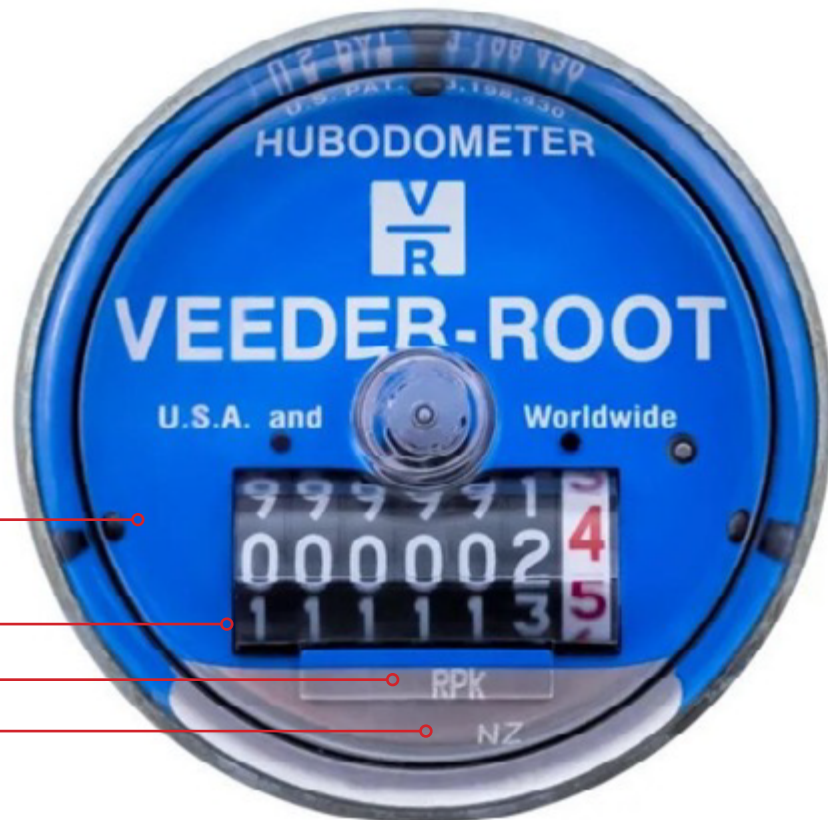
Approved Hubodometers (Hubo's)

Approved Hubodometers (Hubo's) or electronic distance recorders are a legal requirement for any vehicle over 3.5 tonnes needing a RUC licence, under the Road User Chargers Act 2012 section 8.

Mechanical Hubo's are a simple and cost-effective way to help keep your vehicle compliant and avoid any of the common issues found with electrical distance recorders. Veeder-Root are not only approved by NZTA Waka Kotahi they are market leaders.

The Veeder-Root Hubodometer uses a mechanical counting mechanism to track distance travelled, with a durable metal case and a tamper-resistant design to ensure accuracy and reliability. It is designed to be easily installed on the vehicle's axle and features a simple-to-read display that shows the distance travelled in kilometres.

One of the key benefits of the Veeder-Root Hubodometer is its rugged construction and durability, making it ideal for use in the demanding New Zealand conditions.



The classic Veeder-Root Hubodometer

Made with quality products, built to last. Twin skinned and sealed to protect from weather and tampering.

Easy to read numbers with magnified viewing panel

RPK rating, Revolutions Per Kilometre.

Manufacture serial number, required by NZTA.

What model Hubo do I need?

Because the Hubo measures how many revolutions a wheel does and displays this information in kilometres travelled, the Hubo needs to suit the tyre size this is known as the RPK or Revolutions Per Kilometre.

Look for your tyre make and model in the chart on page 7. Or we can measure from the centre of the hub to the ground, run this through a calculation that gives us the RPK, however you will need to apply for special approval through NZTS.

Important to remember that if you change your type of tyre you will need to check the Hubo is the correct match.

For example, a tyre size of 265/75R22.5 will turn 343 times to travel one kilometre, that is 343 RPK

However, because tyres wear and trucks go around corners there is a tolerance of up to 2.5% between Hubo and Tyre calibration.

Talk to your supplier about finding the correct size.

Who needs to use a Hubo?

According to NZTA every vehicle over 3.5 tonnes needing a RUC licence must be fitted with an approved Hubodometer or approved electronic distance recorder.

[RUC distance recorders](#) | [Waka Kotahi NZ Transport Agency \(nzta.govt.nz\)](#)

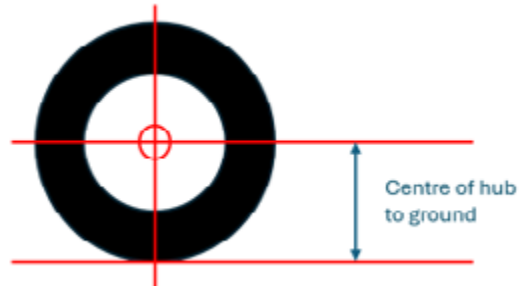
Note: it is the responsibility of the operator/owner of the vehicle to make sure the Hubo is recording correctly. This can be done by comparing it to vehicle odometer on a regular basis.

How should the Hubo be fitted?

Hubodometers must be set to read in kilometres for the size of the tyre and have a unique manufacturer's serial number inside the casing of the meter.

A Hubodometer must be fitted at all times, to a non-lifting axle, on the left-hand side of the vehicle, unless special approval is granted by NZTA.

Mechanical Hubo, like Veeder-Root 7777 series, need to be fitted centred on the axle for them to work accurately. There is a very fine tolerance (1.6mm max) , if the unit is offset on the axle the internal mechanism will be affected by centrifugal force stopping it from recording.



Hubodometers: Veeder-Root 7777 Series

Stocked Part Numbers

- 260RPK
- 294RPK
- 306RPK
- 310.3RPK
- 316.6RPK
- 333.3RPK
- 343RPK
- 350RPK
- 364RPK
- 366.6RPK
- 381.3RPK
- 392RPK
- 400RPK
- 416RPK
- 433.3RPK
- 450RPK
- 465RPK
- 484.5RPK
- 500RPK
- 514.5RPK
- 525RPK
- 546RPK
- 550RPK
- 572RPK
- 588RPK



* Normally stocked, check for availability

How do I know my Hubo is reading correctly?

It is recommended that weekly checks between the Hubo reading and vehicle odometer are done. Comparing the two distance recordings are similar. Note: this is your responsibility to make sure the Hubo is recording correctly.

Why is my Hubo not recording the same as my odometer or at all?

There are some things to check that can answer this question

1. Is the Hubo centred on the wheel, it needs to be within 1.6mm from axle hub centre. If not centred the centrifugal forces will stop the internals from freely rotating.
2. Is the Hubo aligned with the wheel? i.e. has the bracket been damaged/bent or if direct mount misaligned/bent it? nobody has used it as a step?
3. "The most common cause of Hubodometer problems is improper Hubodometer mounting."
4. Is there is any visible damage, like water ingress or dents. These are strong units; external damage will indicate potential internal damage. It may need replacing.
5. Does the RPK match the tyre size? Tyres or wheels get changed do you still have the correct Hubo to suit?
6. What surface are you mostly driving on? Gravel roads with a lot of corrugations, or excessive vibration, may disrupt the internal movement of the Hubo.

What if my tyre size is not on the Application Guide?

We can help to calculate what we think will be the correct size for your vehicle, but you will need to request approval from NZTA.

How should my Hubo be fitted?

Centred on the left rear wheel of a non-lifting axle. There is a maximum variance of 1.6mm from rotational centre, and it must be aligned true and straight with the wheel. Securing with the supplied washer and lock nut torqued to 24-30 Nm. Follow the fitting instructions supplied.

Warranty

Veeder-Root Hubodometers have a 500,000 kilometre warranty against any manufacturing or material defects.

If the Hubodometer is not working properly due to manufacturing or material defects we will replace the unit only, any other associated costs will not be claimable. Ref T&C's.

BRACKETS

Part No.	Description
TS25	Bracket 113 – 210mm
ACZL	Bracket Z Type 129 – 190mm
ACZS	Bracket Z Type 103 – 150mm
MERCBRKT	Bracket to suit Mercedes Sprinter
KEABRKT	Bracket to suit Ford Transit
10003773	SAF suit Tyre Pilot B19
10003780	SAF suit Tyre Pilot Z19



HUB CAPS



Part No.	Description
0009H	Hub Cap 8 1/8" Snap on Chrome



Part No.	Description
0011H	Hub Cap 8 5/8" Snap on Chrome



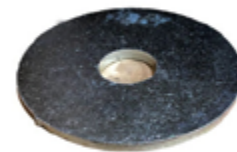
Part No.	Description
9103H	Hub Cap 8" Snap on Chrome



Part No.	Description
9106H	Hub Cap 8 1/4" Snap on Chrome



Part No.	Description
WT4020PH	Propar Hub Cap, Alloy



Part No.	Description
TS5513	Hubo Support Washer



Part No.	Description
359-6117	Stemco Window Kit Hubo Type



Part No.	Description
03304010302	SAF Hubcap Black Plastic - Hubo Z8/Z9/Z19/BIL9

**V
R** VEEDER-ROOT HUBODOMETER APPLICATIONS GUIDE

RPM= Revolutions per Mile
RPK= Revolutions per Kilometer

BRIDGESTONE

SIZE	TREAD	NEW TIRE RPM	RECOMMENDED RPM HUBO	NEW TIRE RPK	RECOMMENDED RPK HUBO
11R22.5	R227	503	510	313	316
11R24.5	R227	480	484	298	300
295/75R22.5	R227	518	520	322	326
285/75R24.5	R227	503	510	313	316
11R22.5	R226	503	510	313	316
11R24.5	R226	476	484	296	300
295/75R22.5	R226	515	520	320	326
285/75R24.5	R226	499	500	310	310
9R22.5	R250F	542	546	337	343
10R22.5	R250F	519	520	323	326
12R22.5	R250F	487	490	303	306
11R22.5	R250F	503	510	313	316
11R24.5	R250F	480	484	298	300
245/75R22.5	R250F	555	572	345	350
265/75R22.5	R250F	541	546	336	343
295/75R22.5	R250F	517	520	321	326
295/80R22.5	R250F	499	500	310	310
285/75R24.5	R250F	502	510	312	312
9.00R20	R250	519	520	323	326
10.00R20	R250	501	510	311	312
11.00R20	R250	489	490	304	306
12.00R20	R250	465	465	289	294
11.00R22	R250	466	468	290	294
295/75R22.5	R299	517	520	321	326
285/75R24.5	R299	502	510	312	312
295/75R22.5	R299FE	517	520	321	326
285/75R24.5	R299FE	502	510	312	312
11R22.5	R293	503	510	313	316
11R24.5	R293	480	484	298	300
295/75R22.5	M720FE	512	514	318	326
285/75R24.5	M720FE	496	500	308	310
11.00R22	M726	462	465	287	294
11R22.5	M726	493	494	306	306
11R24.5	M726	471	475	293	294
285/75R24.5	M726	493	494	306	306
295/75R22.5	M726	507	510	315	316

V **R** VEEDER-ROOT HUBODOMETER APPLICATIONS GUIDE

BRIDGESTONE Continued

RPM= Revolutions per Mile
RPK= Revolutions per Kilometer

SIZE	TREAD	NEW TIRE RPM	RECOMMENDED RPM HUBO	NEW TIRE RPK	RECOMMENDED RPK HUBO
305/75R24.5	M726	481	484	299	300
9R22.5	M726	535	539	333	333
10R22.5	M726	513	514	319	326
265/70R19.5	M726	594	600	369	381
255/70R22.5	M726	561	572	349	350
265/75R22.5	M726	541	546	336	343
10.00R20	M711	496	500	308	310
11R22.5	M711	496	500	308	310
12R22.5	M711	480	484	298	300
11R24.5	M711	473	475	294	294
255/70R22.5	M711	560	572	348	350
295/75R22.5	M711	512	514	318	326
285/75R24.5	M711	496	500	308	310
385/65R22.5	M711WB	490	490	305	306
425/65R22.5	M711WB	469	475	291	294
9R22.5	M716F	538	539	334	343
10R22.5	M716F	515	520	320	326
265/70R19.5	M716	604	612	375	381
285/70R19.5	M716	587	588	365	366
285/75R24.5	R194FE	507	510	315	316
295/75R22.5	R194FE	522	525	324	326
11R22.5	R194	507	510	315	316
11R24.5	R194	483	484	300	300
295/75R22.5	R194	522	525	324	326
285/75R24.5	R194	507	510	315	316
255/70R22.5	R194F	572	572	356	359
295/75R22.5	R194F	522	525	324	326
385/65R22.5	R194 WIDE BASE	490	490	305	306
425/65R22.5	R194 WIDE BASE	468	468	291	294
11R22.5	R196	503	510	313	316
11R24.5	R196	480	484	298	300
295/75R22.5	R196	519	520	323	326
285/75R24.5	R196	501	510	311	312

V R VEEDER-ROOT HUBODOMETER APPLICATIONS GUIDE

BRIDGESTONE Continued

RPM= Revolutions per Mile
RPK= Revolutions per Kilometer

SIZE	TREAD	NEW TIRE RPM	RECOMMENDED RPM HUBO	NEW TIRE RPK	RECOMMENDED RPK HUBO
215/75R17.5	R294LP	681	686	423	424
225/75R17.5	R294LP	668	676	415	416
265/70R19.5	R294LP	607	612	377	381
285/70R19.5	R294LP	592	600	368	381
255/70R22.5	R294LP	567	572	352	359
275/70R22.5	R294LP	547	550	340	343
315/80R22.5	R294LP	489	490	304	306
305/75R24.5	R294LP	488	490	303	306
8.25R15 *	R187	628	637	390	392
10.00R15 *	R187	577	588	359	359
8R19.5	R187F	618	624	384	392
225/70R19.5	R187F	641	650	398	400
245/70R19.5	R187F	624	624	388	392
215/70R17.5	R184*	709	714	441	441
215/75R17.5 *	R184*	679	686	422	424
235/75R17.5 *	R184*	657	676	408	416
9R17.5	R180	628	637	390	392
10R17.5	R180	616	624	383	392
225/70R19.5	M724F	637	637	396	400
245/70R19.5	M724F	619	624	385	392
8R19.5	M724F	613	624	381	381
11R22.5	M843	489	490	304	306
12R22.5	M843	479	484	298	300
315/80R22.5	M843	480	484	298	300
11R24.5	M843	468	468	291	294
12R24.5	M843	458	465	285	294
10.00R20	M840	491	494	305	306
11.00R20	M840	475	475	295	300
12.00R20	M840	462	465	287	294
11.00R22	M840	460	465	286	294
11R22.5	M840	492	494	306	306
10R22.5	M857	515	520	320	326
12R22.5	M857	486	490	302	306
11R24.5	M857	476	484	296	300
900R20	M857	515	520	320	326
1100R24	M857	445	450	277	294

V **R** VEEDER-ROOT HUBODOMETER APPLICATIONS GUIDE

BRIDGESTONE Continued

RPM= Revolutions per Mile
RPK= Revolutions per Kilometer

SIZE	TREAD	NEW TIRE RPM	RECOMMENDED RPM HUBO	NEW TIRE RPK	RECOMMENDED RPK HUBO
1200R24	M857	439	441	273	273
445/65R19.5	M857	491	494	305	306
1000R20	L317	491	494	305	306
1100R20	L317	478	484	297	300
1100R22	L317	456	465	283	294
1100R24	L317	436	441	271	273
11R22.5	L317	490	490	305	306
12R22.5	L317	476	484	296	300
11R24.5	L317	468	468	291	294
11R22.5	M774	484	484	301	306
12R22.5	M774	474	475	295	300
11R24.5	M774	462	465	287	294
385/65R22.5	M844F	489	490	304	306
425/65R22.5	M844F	467	468	290	294
445/65R22.5	M844F	455	465	283	294
445/65R22.5	L312	458	465	285	294
1000-20	K-MILER	501	510	311	312

CONTINENTAL

SIZE	TREAD	NEW TIRE RPM	RECOMMENDED RPM HUBO	NEW TIRE RPK	RECOMMENDED RPK HUBO
11R22.5	HS 45	496	500	308	310
11R24.5	HS 45	473	475	294	294
275/80R22.5	HS 45	512	514	318	326
295/80R22.5	HS 45	496	500	308	310
285/75R24.5	HS 45	496	500	308	310
11R22.5	HD75	494	494	307	310
11R22.5	HD75	494	494	307	310
11R24.5	HD75	472	475	293	294
275/80R22.5	HD75	510	510	317	326
285/75R24.5	HD75	494	494	307	310
315/80R22.5	HD75	491	494	305	306
1100R22	HS41 (TUBE)	466	468	290	294

V **R** VEEDER-ROOT HUBODOMETER APPLICATIONS GUIDE

CONTINENTAL Continued

RPM= Revolutions per Mile
RPK= Revolutions per Kilometer

SIZE	TREAD	NEW TIRE RPM	RECOMMENDED RPM HUBO	NEW TIRE RPK	RECOMMENDED RPK HUBO
11R22.5	HS41 (TUBELESS)	501	510	311	312
11R24.5	HS41 (TUBELESS)	501	510	311	312
275/80R22.5	HS41 (TUBELESS)	521	525	324	326
295/80R22.5	HS41 (TUBELESS)	501	510	311	312
285/75R24.5	HS41 (TUBELESS)	501	510	311	312
245/70R19.5	HS41 (TUBELESS)	628	637	390	392
245/70R19.5	HD70	629	637	391	392
255/70R22.5	HD70	568	572	353	359
265/70R19.5	HD70	609	612	378	381
315/80R22.5	HD70	487	490	303	306
8.25R15 *	HS62 (TUBE)	631	637	392	392
365/80R20	HS62 (TUBE)	486	490	302	306
11R22.5	HS62 (TUBELESS)	500	500	311	312
11R24.5	HS62 (TUBELESS)	477	484	296	300
295/75R22.5	HS62 (TUBELESS)	515	520	320	326
285/75R24.5	HS62 (TUBELESS)	500	500	311	312
255/70R22.5	HS62 (TUBELESS)	566	572	352	359
265/70R19.5	HS62 (TUBELESS)	608	612	378	381
385/65R19.5	HS62 (TUBELESS)	533	539	331	333
10.00R20	RS416 (TUBE)	501	510	311	312
11.00R20	RS416 (TUBE)	489	490	304	306
11R22.5	RS416 (TUBELESS)	500	500	311	312
11R24.5	RS416 (TUBELESS)	476	484	296	300
12R22.5	RS416 (TUBELESS)	489	490	304	306
8R17.5	RS415	673	676	418	424
8.5R17.5	RS415	658	676	409	416
10R17.5	RS415	615	624	382	392
215/75R17.5	LS45	688	700	428	433
12.00R20	HC51 (TUBE)	470	475	292	294
11R22.5	HC51 (TUBELESS)	495	500	308	310
11R24.5	HC51 (TUBELESS)	475	475	295	300
315/80R22.5	HC51 (TUBELESS)	486	490	302	306
10.00R20	HC53 (TUBE)	499	500	310	310
11.00R20	HC53 (TUBE)	484	484	301	306
11.00R22	HC53 (TUBE)	462	465	287	294
12.00R24	HC53 (TUBE)	464	465	288	294
315/80R22.5	HMS45	485	490	301	306

V R VEEDER-ROOT HUBODOMETER APPLICATIONS GUIDE
CONTINENTAL Continued

 RPM= Revolutions per Mile
 RPK= Revolutions per Kilometer

SIZE	TREAD	NEW TIRE RPM	RECOMMENDED RPM HUBO	NEW TIRE RPK	RECOMMENDED RPK HUBO
215/75R17.5	HT63	689	700	428	433
235/75R17.5	HT63	661	676	411	416
385/65R22.5	HT63	495	500	308	310
425/65R22.5	HT63	473	475	294	294
445/65R22.5	HT63	462	465	287	294
385/65R22.5	HC65	495	500	308	310
425/65R22.5	HC65	473	475	294	294
445/65R22.5	HC65	462	465	287	294

FIRESTONE

SIZE	TREAD	NEW TIRE RPM	RECOMMENDED RPM HUBO	NEW TIRE RPK	RECOMMENDED RPK HUBO
11R22.5	T589 (TUBELESS)	503	510	313	316
11R24.5	T589 (TUBELESS)	480	484	298	300
295/75R22.5	T589 (Tubeless Low Profile)	517	520	321	326
285/75R24.5	T589 (Tubeless Low Profile)	502	510	312	312
12.00R20	HP3000 (TUBE)	473	475	294	294
315/80R22.5	HP3000 (TUBELESS)	491	494	305	306
315/80R22.5 *	HP3000 (TUBELESS)	491	494	305	306
385/65R22.5	HP3000 (TUBELESS)	491	494	305	306
9.00R20	T559 (TUBE)	522	525	324	326
10.00R20	T559 (TUBE)	504	510	313	316
9R22.5	T559 (TUBELESS)	544	546	338	343
10R22.5	T559 (TUBELESS)	522	525	324	326
11R22.5	T559 (TUBELESS)	504	510	313	316
11R24.5	T559 (TUBELESS)	481	484	299	300
295/75R22.5	T559 (TUBELESS)	519	520	323	326
285/75R24.5	T559 (TUBELESS)	503	510	313	316
11R22.5	T545 (TUBELESS)	507	510	315	316
11R24.5	T545 (TUBELESS)	483	484	300	300
295/75R22.5	T545 (Tubeless Low Profile)	522	525	324	326
285/75R24.5	T545 (Tubeless Low Profile)	507	510	315	316
11.00R20	T575 (TUBE)	488	490	303	306
11.00R20	T575 (TUBE)	469	475	291	294
14/80R20	HP2000 (TUBE)	484	484	301	306

V **R** VEEDER-ROOT HUBODOMETER APPLICATIONS GUIDE

RPM= Revolutions per Mile
RPK= Revolutions per Kilometer

FIRESTONE Continued

SIZE	TREAD	NEW TIRE RPM	RECOMMENDED RPM HUBO	NEW TIRE RPK	RECOMMENDED RPK HUBO
12R22.5	T575 (TUBELESS)	488	490	303	306
255/70R22.5	T575 (TUBELESS)	566	572	352	359
10.00R20	UT2000/UT3000 (TUBE)	503	510	313	316
11.00R20	UT2000/UT3000 (TUBE)	487	490	303	306
12.00R20	UT2000/UT3000 (TUBE)	472	475	293	294
10.00R22	UT2000/UT3000 (TUBE)	480	484	298	300
11.00R22	UT2000/UT3000 (TUBE)	465	465	289	294
12.00R24	UT2000/UT3000 (TUBE)	433	433	269	273
11R22.5	UT2000/UT3000 (Tubeless)	502	510	312	312
11R24.5	UT2000/UT3000 (Tubeless)	479	484	298	300
12R22.5	UT2000/UT3000 (Tubeless)	485	490	301	306
315/80R22.5	UT2000/UT3000 (Tubeless)	490	490	305	306
10R22.5	T663 (Tubeless)	513	514	319	326
11R22.5	T663 (Tubeless)	496	500	308	310
11R24.5	T663 (Tubeless)	473	475	294	294
295/75R22.5	T665 (Tubeless Low Profile)	512	514	318	326
285/75R24.5	T665 (Tubeless Low Profile)	496	500	308	310
9.00R20	T546PSD (TUBE)	515	520	320	326
10.00R20	T546PSD (TUBE)	501	510	311	312
12R22.5	PSD3000 (TUBELESS)	484	484	301	306
10.00R20	T831 (TUBE)	491	494	305	306
11.00R20	T831 (TUBE)	478	484	297	300
11R22.5	T831 (TUBELESS)	490	490	305	306
12R22.5	T831 (TUBELESS)	476	484	296	300
11R24.5	T831 (TUBELESS)	467	468	290	294
10.00R20	T823/T506 (TUBE)	495	500	308	310
11.00R20	T823/T506 (TUBE)	481	484	299	300
11R22.5	T823/T506 (TUBELESS)	495	500	308	310
11R24.5	T823/T506 (TUBELESS)	473	475	294	294
15R22.5	DUPLEX 2000	503	510	313	316
16.5R22.5	DUPLEX 2000	481	484	299	300
18R22.5	DUPLEX 2000	466	468	290	294
7.50-20	Transport 1 Nylon (Tube)	568	572	353	359
8.25-20	Transport 1 Nylon (Tube)	543	546	337	343
9.00-20	Transport 1 Nylon (Tube)	520	520	323	326
10.00-20	Transport 1 Nylon (Tube)	506	510	314	316
11.00-20	Transport 1 Nylon (Tube)	491	494	305	306

V **R** VEEDER-ROOT HUBODOMETER APPLICATIONS GUIDE

FIRESTONE Continued

RPM= Revolutions per Mile
RPK= Revolutions per Kilometer

SIZE	TREAD	NEW TIRE RPM	RECOMMENDED RPM HUBO	NEW TIRE RPK	RECOMMENDED RPK HUBO
10.00-22	Transport 1 Nylon (Tube)	484	484	301	306
11.00-22	Transport 1 Nylon (Tube)	466	468	290	294
9-22.5	Transport 1 Nylon (Tubeless)	545	546	339	343
10-22.5	Transport 1 Nylon (Tubeless)	519	520	323	326
11-22.5	Transport 1 Nylon (Tubeless)	504	510	313	316
11-24.5	Transport 1 Nylon (Tubeless)	482	484	300	300
8.25-20	Power Drive Nylon (Tube)	533	539	331	333
9.00-20	Power Drive Nylon (Tube)	509	510	316	316
10.00-20	Power Drive Nylon (Tube)	492	494	306	306
11.00-20	Power Drive Nylon (Tube)	485	490	301	306
11-22.5	Power Drive Nylon (Tubeless)	492	494	306	306
7.50-15TR	Heavy Duty Transport Nylon	660	676	410	416
8.25-15TR	Heavy Duty Transport Nylon	630	637	392	392

GENERAL

SIZE	TREAD	NEW TIRE RPM	RECOMMENDED RPM HUBO	NEW TIRE RPK	RECOMMENDED RPK HUBO
11R22.5	S380A	500	500	311	312
11R24.5	S380A	475	475	295	300
295/75R22.5	S380A	515	520	320	326
285/75R245	S380A	500	500	311	312
11R22.5	D460	494	494	307	310
11R24.5	D460	472	475	293	294
295/75R22.5	D460	510	510	317	326
285/75R24.5	D460	494	494	307	310
11R22.5	D450	494	494	307	310
11R24.5	D450	472	475	293	294
295/75R22.5	D450	510	510	317	326
285/75R24.5	D450	494	494	307	310

V **R** VEEDER-ROOT HUBODOMETER APPLICATIONS GUIDE

GENERAL Continued

RPM= Revolutions per Mile
RPK= Revolutions per Kilometer

SIZE	TREAD	NEW TIRE RPM	RECOMMENDED RPM HUBO	NEW TIRE RPK	RECOMMENDED RPK HUBO
11R22.5	Gen Rib ST (A)	505	510	314	316
11R24.5	Gen Rib ST (A)	481	484	299	300
295/75R22.5	Gen Rib ST (B)	515	520	320	326
285/75R24.5	Gen Rib ST (B)	500	500	311	312
8.25R20	Ameristeel (tube)	542	546	337	343
9.00R20	Ameristeel (tube)	519	520	323	326
9.00R20	Ameristeel (tube)	519	520	323	326
10.00R20	Ameristeel (tube)	501	510	311	312
10.00R22	Ameristeel (tube)	477	484	296	300
11.00R20	Ameristeel (tube)	489	490	304	306
12.00R20	Ameristeel (tube)	466	468	290	294
365/80R20	Ameristeel (tube)	483	484	300	300
9R22.5	Ameristeel (tubeless)	542	546	337	343
10R22.5	Ameristeel (tubeless)	518	520	322	326
11R22.5	Ameristeel (tubeless)	500	500	311	312
11R22.5 *	Ameristeel (tubeless)	500	500	311	312
11R24.5	Ameristeel (tubeless)	476	484	296	300
12R22.5	Ameristeel (tubeless)	489	490	304	306
245/70R19.5	Ameristeel (tubeless)	627	637	390	392
315/80R22.5	Ameristeel (tubeless)	488	490	303	306
385/65R22.5	Ameristeel (tubeless)	494	494	307	310
11R22.5	GENERAL S370	500	500	311	312
11R24.5	GENERAL S370	477	484	296	300
295/75R22.5	GENERAL S370	515	520	320	326
285/75R24.5	GENERAL S370	500	500	311	312
9.00R20	AmeriMSL (tube)	515	520	320	326
10.00R20	AmeriMSL (tube)	499	500	310	310
10.00R22	AmeriMSL (tube)	475	475	295	300
11.00R20	AmeriMSL (tube)	484	484	301	306
11.00R22	AmeriMSL (tube)	462	465	287	294
11.00R24	AmeriMSL (tube)	442	450	275	294
10R22.5	AmeriMSL (tubeless)	516	520	321	326
11R22.5 *	AmeriMSL (tubeless)	498	500	310	310
11R24.5	AmeriMSL (tubeless)	475	475	295	300
12R22.5 *	AmeriMSL (tubeless)	489	490	304	306

V **R** VEEDER-ROOT HUBODOMETER APPLICATIONS GUIDE

GENERAL Continued

RPM= Revolutions per Mile
RPK= Revolutions per Kilometer

SIZE	TREAD	NEW TIRE RPM	RECOMMENDED RPM HUBO	NEW TIRE RPK	RECOMMENDED RPK HUBO
12R24.5	AmeriMSL (tubeless)	462	465	287	294
315/80R22.5 *	AmeriMSL (tubeless)	487	490	303	306
385/65R22.5	AmeriMSL (tubeless)	492	494	306	306
9.00R20	AmeriLUG (tube)	516	520	321	326
10.00R20	AmeriLUG (tube)	499	500	310	310
10.00R20	AmeriLUG (tube)	495	500	308	310
11.00R20	AmeriLUG (tube)	484	484	301	306
10R22.5	AmeriLUG (tubeless)	511	514	318	326
12R22.5	AmeriLUG (tubeless)	481	484	299	300
10.00R20	AmeriLUG MS (tube)	495	500	308	310
11R22.5 *	AmeriLUG MS (tubeless)	495	500	308	310
11R24.5	AmeriLUG MS (tubeless)	472	475	293	294
10.00R20	AmeriLUG DT (tube)	488	490	303	306
11.00R20	AmeriLUG DT (tube)	476	484	296	300
11.00R22	AmeriLUG DT (tube)	455	465	283	294
11R22.5	AmeriLUG DT (tubeless)	488	490	303	306
11R24.5	AmeriLUG DT (tubeless)	466	468	290	294
245/75R22.5	Ameri SD400 (tubeless)	555	572	345	350
265/75R22.5	Ameri SD400 (tubeless)	538	539	334	343
225/70R19.5	LMT 400	649	650	403	416
225/70R19.5	LMT 460	647	650	402	416
255/70R22.5 *	Ameri LP 70 (tubeless)	566	572	352	359
8.25R15TR **	AmeriSteel LPT (tube)	629	637	391	392
215/75R17.5	AmeriSteel LPT (tubeless)	679	686	422	424
235/75R17.5	AmeriSteel LPT (tubeless)	653	650	406	416

V **R** VEEDER-ROOT HUBODOMETER APPLICATIONS GUIDE

GOODYEAR

RPM= Revolutions per Mile
RPK= Revolutions per Kilometer

SIZE	TREAD	NEW TIRE RPM	RECOMMENDED RPM HUBO	NEW TIRE RPK	RECOMMENDED RPK HUBO
295/75R22.5	Unisteel G357	518	520	322	326
285/75R24.5	Unisteel G357	503	510	313	316
11R22.5	Unisteel G357	503	510	313	316
11R24.5	Unisteel G357	480	484	298	300
295/75R22.5	Unisteel G259	514	514	319	326
285/75R24.5	Unisteel G259	503	510	313	316
11R22.5	Unisteel G259	501	510	311	312
11R24.5	Unisteel G259	478	484	297	300
11R22.5	Unisteel G132	503	510	313	316
11R24.5	Unisteel G132	480	484	298	300
295/75R22.5	Unisteel LP	518	520	322	326
285/75R24.5	Unisteel LP	504	510	313	316
225/70R19.5	Unisteel G159 & G159A	644	650	400	400
245/70R19.5	Unisteel G159 & G159A	625	637	388	392
265/70R19.5	Unisteel G159 & G159A	609	612	378	381
255/70R22.5	Unisteel G159 & G159A	568	572	353	359
275/70R22.5	Unisteel G159 & G159A	551	572	342	343
245/75R22.5	Unisteel G159 & G159A	561	572	349	350
265/75R22.5	Unisteel G159 & G159A	537	539	334	343
295/75R22.5	Unisteel G159 & G159A	514	514	319	326
285/75R24.5	Unisteel G159 & G159A	503	510	313	316
9R22.5	Unisteel G159 & G159A	541	546	336	343
10R22.5	Unisteel G159 & G159A	518	520	322	326
11R22.5	Unisteel G159 & G159A	501	510	311	312
11R24.5	Unisteel G159 & G159A	478	484	297	300
12R22.5	Unisteel G159 & G159A	484	484	301	306
8.25R20	Unisteel G159 & G159A	541	546	336	343
9.00R20	Unisteel G159 & G159A	517	520	321	326
10.00R20	Unisteel G159 & G159A	501	510	311	312
10.00R22	Unisteel G159 & G159A	478	484	297	300
11.00R20	Unisteel G159 & G159A	484	484	301	306
365/80R20	Unisteel G159 & G159A	483	484	300	300
225/70R19.5	Unisteel G291, G391	651	676	405	416
245/70R19.5	Unisteel G291, G391	629	637	391	392
285/70R19.5	Unisteel G291, G391	588	588	365	366
295/80R22.5	Unisteel G291, G391	503	510	313	316
315/80R22.5	Unisteel G291, G391	491	494	305	310
8R17.5	Unisteel G291, G391	672	676	418	424
8.5R17.5	Unisteel G291, G391	655	676	407	416

V **R** VEEDER-ROOT HUBODOMETER APPLICATIONS GUIDE

GOODYEAR Continued

RPM= Revolutions per Mile
RPK= Revolutions per Kilometer

SIZE	TREAD	NEW TIRE RPM	RECOMMENDED RPM HUBO	NEW TIRE RPK	RECOMMENDED RPK HUBO
315/80R22.5	Unisteel G291, G391	491	494	305	306
215/75R17.5	Unisteel G114	679	686	422	424
255/70R22.5	Unisteel G114	566	572	352	359
295/75R22.5	Unisteel G114	513	514	319	326
285/75R24.5	Unisteel G114	500	500	311	312
9R17.5HC	Unisteel G114	619	624	385	392
10R17.5	Unisteel G114	612	612	380	381
11R17.5HC	Unisteel G114	568	572	353	359
10R22.5	Unisteel G114	519	520	323	326
11R22.5	Unisteel G114	499	500	310	310
11R24.5	Unisteel G114	476	484	296	300
8.25R15TR	Unisteel G114	619	624	385	392
10.00R15TR	Unisteel G114	566	572	352	359
10.00R20	Unisteel G114	498	500	310	310
295/75R22.5	Unisteel G314	518	520	322	326
285/75R24.5	Unisteel G314	504	510	313	316
11R22.5	Unisteel G314	502	510	312	312
11R24.5	Unisteel G314	478	484	297	300
11R22.5	Unisteel G143 (Canada only)	495	500	308	310
11R24.5	Unisteel G143 (Canada only)	472	475	293	294
12R22.5	Unisteel G143 (Canada only)	485	490	301	306
295/75R22.5	Unisteel G167	512	514	318	326
285/75R24.5	Unisteel G167	496	500	308	310
10R22.5	Unisteel G167	513	514	319	326
11R22.5	Unisteel G167	497	500	309	310
11R24.5	Unisteel G167	474	475	295	300
12R22.5	Unisteel G167	483	484	300	300
9.00R20	Unisteel G167	513	514	319	326
10.00R20	Unisteel G167	497	500	309	310
11.00R20	Unisteel G167	483	484	300	300
295/75R22.5	Unisteel G362	512	514	318	326
285/75R24.5	Unisteel G362	497	500	309	310
11R22.5	Unisteel G362	497	500	309	310
11R24.5	Unisteel G362	474	475	295	300
225/70R19.5	Unisteel G124	645	650	401	416
245/70R19.5	Unisteel G124	626	637	389	392
265/70R19.5	Unisteel G124	607	612	377	381
255/70R22.5	Unisteel G124	564	572	351	359

V **R** VEEDER-ROOT HUBODOMETER APPLICATIONS GUIDE

GOODYEAR Continued

RPM= Revolutions per Mile
RPK= Revolutions per Kilometer

SIZE	TREAD	NEW TIRE RPM	RECOMMENDED RPM HUBO	NEW TIRE RPK	RECOMMENDED RPK HUBO
245/75R22.5	Unisteel G124	557	572	346	350
265/75R22.5	Unisteel G124	537	539	334	343
295/75R22.5	Unisteel G124	512	514	318	326
285/75R24.5	Unisteel G124	497	500	309	310
315/80R22.5	Unisteel G124	486	490	302	306
9R22.5	Unisteel G124	538	539	334	343
10R22.5	Unisteel G124	514	514	319	326
11R22.5	Unisteel G124	498	500	310	310
11R24.5	Unisteel G124	475	475	295	300
12R22.5	Unisteel G124	482	484	300	300
8.25R20	Unisteel G124	538	539	334	343
9.00R20	Unisteel G124	517	520	321	326
10.00R20	Unisteel G124	498	500	310	310
10.00R22	Unisteel G124	475	475	295	300
11.00R20	Unisteel G124	482	484	300	300
285/75R24.5	Unisteel G328	497	500	309	310
295/75R22.5	Unisteel G328	512	514	318	326
11R22.5	Unisteel G328	496	500	308	310
11R24.5	Unisteel G328	473	475	294	294
11R22.5	Unisteel G286 Hwy. 65mph	496	500	308	310
11R24.5	Unisteel G286 Hwy. 65mph	473	475	294	294
12R22.5	Unisteel G286 Hwy. 65mph	483	484	300	300
12R24.5	Unisteel G286 Hwy. 65mph	462	465	287	294
315/80R22.5	Unisteel G286 Hwy. 65mph	486	490	302	306
10.00R20	Unisteel G286 Hwy. 55mph	495	500	308	310
10.00R22	Unisteel G286 Hwy. 55mph	472	475	293	294
11.00R20	Unisteel G286 Hwy. 55mph	483	484	300	300
11.00R22	Unisteel G286 Hwy. 55mph	462	465	287	294
11.00R24	Unisteel G286 Hwy. 55mph	442	450	275	294
12.00R24	Unisteel G286 Hwy. 55mph	430	433	267	294
14.00R20	Unisteel G286 Hwy. 55mph	431	433	268	294
10R22.5	Unisteel G186 Hwy. 65mph	514	514	319	326
11R22.5	Unisteel G186 Hwy. 65mph	497	500	309	310
11R24.5	Unisteel G186 Hwy. 65mph	474	475	295	300
13R22.5	Unisteel G186 Hwy. 65mph	468	468	291	294
215/75R17.5	Unisteel G186 Hwy. 55mph	671	676	417	424
9.00R20	Unisteel G186 Hwy. 65mph	514	514	319	326

V **R** VEEDER-ROOT HUBODOMETER APPLICATIONS GUIDE

GOODYEAR Continued

RPM= Revolutions per Mile
RPK= Revolutions per Kilometer

SIZE	TREAD	NEW TIRE RPM	RECOMMENDED RPM HUBO	NEW TIRE RPK	RECOMMENDED RPK HUBO
10.00R20	Unisteel G186 Hwy. 65mph	497	500	309	310
10.00R22	Unisteel G186 Hwy. 65mph	474	475	295	300
12.00R20	Unisteel G186 Hwy. 65mph	471	475	293	294
14/80R20	Unisteel G186 Hwy. 65mph	484	484	301	306
11R22.5	Unisteel G177 Hwy. 65mph	493	494	306	306
11R24.5	Unisteel G177 Hwy. 65mph	471	475	293	294
12R22.5	Unisteel G177 Hwy. 65mph	478	484	297	300
12R24.5	Unisteel G177 Hwy. 65mph	457	465	284	294
10.00R20	Unisteel G177 Hwy. 65mph	493	494	306	306
11.00R20	Unisteel G177 Hwy. 65mph	478	484	297	300
11.00R22	Unisteel G177 Hwy. 65mph	457	465	284	294
12.00R24	Unisteel G177 50mph max	423	424	263	273
11R22.5	Unisteel G188 Hwy. 65mph	492	494	306	306
11R24.5	Unisteel G188 Hwy. 65mph	470	475	292	294
12R22.5	Unisteel G188 Hwy. 65mph	480	484	298	300
12R24.5	Unisteel G188 Hwy. 65mph	459	465	285	294
10.00R20	Unisteel G188 Hwy. 65mph	492	494	306	306
10.00R22	Unisteel G188 Hwy. 65mph	470	475	292	294
11.00R20	Unisteel G188 Hwy. 65mph	480	484	298	300
11.00R22	Unisteel G188 Hwy. 65mph	459	465	285	294
11.00R24	Unisteel G188 Hwy. 65mph	439	441	273	273
12.00R20	Unisteel G188 Hwy. 65mph	468	468	291	294
12.00R24	Unisteel G188 Hwy. 65mph	428	433	266	273
14.00R20	Unisteel G188 Hwy. 55mph	424	424	264	273
11R22.5	Unisteel G144 Hwy. 65mph	496	500	308	310
11R24.5	Unisteel G144 Hwy. 65mph	473	475	294	294
10.00R20	Unisteel G144 Hwy. 65mph	496	500	308	310
11.00R22	Unisteel G144 Hwy. 65mph	460	465	286	294
395/85R20	Unisteel MV/T Hwy. 65mph	446	450	277	294
12.5R20	G800A Hwy. 55mph	512	514	318	326
11R24.5	Unisteel G175 Hwy. 65mph	470	475	292	294
385/65R22.5	Unisteel G178 Super Single	485	490	301	306
425/65R22.5	Unisteel G178 Super Single	465	465	289	294
445/65R22.5	Unisteel G178 Super Single	452	465	281	294

V **R** VEEDER-ROOT HUBODOMETER APPLICATIONS GUIDE

GOODYEAR Continued

RPM= Revolutions per Mile
RPK= Revolutions per Kilometer

SIZE	TREAD	NEW TIRE RPM	RECOMMENDED RPM HUBO	NEW TIRE RPK	RECOMMENDED RPK HUBO
385/65R22.5	Unisteel G286 Super Single	490	490	305	306
425/65R22.5	Unisteel G286 Super Single	470	475	292	294
445/65R22.5	Unisteel G286 Super Single	456	465	283	294
8.75R16.5LT	Unisteel G159	719	728	447	450
9.50R16.5LT	Unisteel G159	692	700	430	433
7.50R16LT	Unisteel G159	670	676	416	416
LT215/85R16	Unisteel G159	683	686	424	424
LT235/85R16	Unisteel G159	677	686	421	424
LT235/85R16	Unisteel G159	669	676	416	416
8R19.5	Unisteel G159	628	637	390	392
LT225/75R16	Unisteel G159	703	714	437	441
LT245/75R16	Unisteel G159	677	686	421	424
LT215/85R16	Unisteel G133	683	686	424	424
LT235/85R16	Unisteel G133	673	676	418	424
8R19.5	Unisteel G133	626	637	389	393
8.75R16.5LT	Unisteel G171	711	714	442	450
9.50R16.5LT	Unisteel G171	683	686	424	424
7.50R16LT	Unisteel G171	663	676	412	416
LT215/85R16	Unisteel G171	674	676	419	424
LT235/85R16	Unisteel G171	670	676	416	416
8R19.5	Unisteel G171	620	624	385	392
10-22.5	Super Hi-Miler	511	514	318	326
11-22.5	Super Hi-Miler	495	500	308	310
11-24.5	Super Hi-Miler	473	475	294	294
7.50-20	Super Hi-Miler	558	572	347	350
8.25-20	Super Hi-Miler	537	539	334	343
9.00-20	Super Hi-Miler	514	514	319	326
10.00-20	Super Hi-Miler	499	500	310	310
11.00-20	Super Hi-Miler	482	484	300	300
11.00-22	Super Hi-Miler	465	465	289	294
12.00-20	Custom Hi-Miler Hwy. 65mph	466	468	290	294
124.00-24	Custom Hi-Miler Hwy. 50mph	393	400	244	245
11-22.5	Custom Cross Rib Hi-Miler	492	494	306	306
10.00-20	Custom Cross Rib Hi-Miler	495	500	308	310
7.50-20	Custom XTRA Grip Hi-Miler	551	572	342	343
8.25-20	Custom XTRA Grip Hi-Miler	529	539	329	333
9.00-20	Custom XTRA Grip Hi-Miler	506	510	314	316

V **R** VEEDER-ROOT HUBODOMETER APPLICATIONS GUIDE

GOODYEAR Continued

RPM= Revolutions per Mile
RPK= Revolutions per Kilometer

SIZE	TREAD	NEW TIRE RPM	RECOMMENDED RPM HUBO	NEW TIRE RPK	RECOMMENDED RPK HUBO
10.00-20	Custom XTRA Grip Hi-Miler	495	500	308	310
11.00-20	Custom XTRA Grip Hi-Miler	479	484	298	300
11-22.5	Hi-Miler CS2	504	510	313	316
11-24.5	Hi-Miler CS2	480	484	298	300
8.25-20	Hi-Miler CS2	544	546	338	343
9.00-20	Hi-Miler CS2	519	520	323	326
10.00-20	Hi-Miler CS2	504	510	313	316
10.00-22	Hi-Miler CS2	480	484	298	300
8-22.5	Trailer Special	556	572	346	350
11-22.5	Trailer Special	504	510	313	316
10.00-20	Trailer Special	504	510	313	316

KELLY

SIZE	TREAD	NEW TIRE RPM	RECOMMENDED RPM HUBO	NEW TIRE RPK	RECOMMENDED RPK HUBO
10.00R20	Armorsteel KSA (Tube)	503	510	313	316
11R22.5	Armorsteel KSA (Tubeless)	503	510	313	316
295/75R22.5	Armorsteel KSA (Tubeless)	518	520	322	326
295/75R22.5	Armorsteel KSA (Tubeless)	518	520	322	326
285/75R24.5	Armorsteel KSA (Tubeless)	504	510	313	316
11R24.5	Armorsteel KSA (Tubeless)	480	484	298	300
11R22.5	Armorsteel KSE	505	510	314	316
11R24.5	Armorsteel KSE	482	484	300	300
285/75R24.5	Armorsteel KSE	506	510	314	316
9.00R20	Armorsteel KLH I (Tube)	517	520	321	326
11.00R20	Armorsteel KLH I (Tube)	484	484	301	306
10R22.5	Armorsteel KLH I (Tubeless)	518	520	322	326
10R22.5	Armorsteel KLH I (Tubeless)	518	520	322	326
12R22.5	Armorsteel KLH I (Tubeless)	484	484	301	306
255/70R22.5	Armorsteel KSR I	568	572	353	359
215/75R17.5	Armorsteel KSR I	678	686	421	424
245/70R19.5	Armorsteel KSR I	629	637	391	392
265/75R22.5	Armorsteel KSR I	535	539	333	333
11R22.5	Armorsteel KSR I	503	510	313	316
295/75R22.5	Armorsteel KSR I	515	520	320	326

V R VEEDER-ROOT HUBODOMETER APPLICATIONS GUIDE

KELLY Continued

RPM= Revolutions per Mile
RPK= Revolutions per Kilometer

SIZE	TREAD	NEW TIRE RPM	RECOMMENDED RPM HUBO	NEW TIRE RPK	RECOMMENDED RPK HUBO
285/75R24.5	Armorsteel KSR I	500	500	311	312
11R24.5	Armorsteel KSR I	480	484	298	300
295/75R22.5	Armorsteel KDA	509	510	316	316
285/75R24.5	Armorsteel KDA	495	500	308	310
11R22.5	Armorsteel KDA	494	494	307	310
11R24.5	Armorsteel KDA	471	475	293	294
295/75R22.5	Armorsteel KDM I (Tubeless)	509	510	316	316
285/75R24.5	Armorsteel KDM I (Tubeless)	495	500	308	310
11R22.5	Armorsteel KDM I (Tubeless)	494	500	307	310
11R24.5	Armorsteel KDM I (Tubeless)	471	475	293	294
10.00R20	Armorsteel KDM I (Tube)	494	494	307	310
11R22.5	Armorsteel KTSA	503	510	313	316
11R24.5	Armorsteel KTSA	478	484	297	300
295/75R22.5	Armorsteel KTSA	518	520	322	326
285/75R24.5	Armorsteel KTSA	504	510	313	316
255/70R22.5	Armorsteel KTSA	566	572	352	359
11R22.5	Armorsteel KGR	502	510	312	312
11R24.5	Armorsteel KGR	479	484	298	300
295/75R22.5	Armorsteel KGR	515	520	320	326
285/75R24.5	Armorsteel KGR	503	510	313	316
10.00R20	Armorsteel KGR	502	510	312	312
11R22.5	Armorsteel KGL	497	500	309	310
11R24.5	Armorsteel KGL	474	475	295	300
295/75R22.5	Armorsteel KGL	512	514	318	326
285/75R24.5	Armorsteel KGL	499	500	310	310
10.00R20	Armorsteel KGL	497	500	309	310
10-22.5	Custom Armor Trac Bias Ply	513	514	319	326
11-22.5	Custom Armor Trac Bias Ply	498	500	310	310
1000-22	Custom Armor Trac Bias Ply	471	475	293	294
1100-20	Custom Armor Trac Bias Ply	480	484	298	300
11-24.5	Custom Armor Trac Bias Ply	469	475	291	294
1000-20	HD Explorer Trac Bias Ply	483	484	300	300
1000-20	Highway Armor Trac Bias Ply	493	494	306	306
11-22.5	Highway Armor Trac Bias Ply	493	494	306	306

V **R** VEEDER-ROOT HUBODOMETER APPLICATIONS GUIDE

KELLY Continued

RPM= Revolutions per Mile
RPK= Revolutions per Kilometer

SIZE	TREAD	NEW TIRE RPM	RECOMMENDED RPM HUBO	NEW TIRE RPK	RECOMMENDED RPK HUBO
1000-22	Highway Armor Trac Bias Ply	465	465	289	294
11-24.5	Highway Armor Trac Bias Ply	465	465	289	294
10-22.5	Registered Drive Trac Bias PI	508	510	316	316
1000-20	Registered Drive Trac Bias PI	488	490	303	306
11-22.5	Registered Drive Trac Bias PI	486	490	302	306
1100-20	Registered Drive Trac Bias PI	474	475	295	300

MICHELIN

SIZE	TREAD	NEW TIRE RPM	RECOMMENDED RPM HUBO	NEW TIRE RPK	RECOMMENDED RPK HUBO
11R22.5	XZA2	504	510	313	316
11R22.5	XZA2	504	510	313	316
12R22.5	XZ2	490	490	305	306
275/80R22.5	XZA2	519	520	323	326
275/80R22.5	XZA2	519	520	323	326
11R24.5	XZA2	479	484	298	300
275/80R24.5	XZA2	503	510	313	316
11R22.5	XZA-1+	501	510	311	312
11R22.5	XZA-1	501	510	311	312
275/80R22.5	XZA-1+	516	520	321	326
11R24.5	XZA-1+	479	484	298	300
275/80R24.5	XZA-1+	501	510	311	312
315/80R22.5	XZA1	489	490	304	306
275/70R22.5	XZA1	545	546	339	343
225/70R19.5	XRV	649	650	403	416
235/80R22.5	XRV	556	572	346	350
255/80R22.5	XRV	541	546	336	343
11R22.5	XDA2	495	500	308	310
255/70R22.5	XD2	558	572	347	350
275/80R22.5	XDA2	510	510	317	326
11R24.5	XDA2	473	475	294	294
275/80R24.5	XDA2	495	500	308	310
11R22.5	XDA+	501	510	311	312
255/70R22.5	XDA+	561	572	349	350
275/80R22.5	XDA+	513	514	319	326

V R VEEDER-ROOT HUBODOMETER APPLICATIONS GUIDE

MICHELIN Continued

RPM= Revolutions per Mile
RPK= Revolutions per Kilometer

SIZE	TREAD	NEW TIRE RPM	RECOMMENDED RPM HUBO	NEW TIRE RPK	RECOMMENDED RPK HUBO
11R24.5	XDA+	479	484	298	300
275/80R24.5	XDA+	501	510	311	312
305/75R24.5	XDA(2)	483	484	300	300
11R22.5	XD4	495	500	308	310
275/80R22.5	XD4	509	510	316	316
11R24.5	XD4	472	475	293	294
275/80R24.5	XD4	495	500	308	310
11R22.5	XDN	495	500	308	310
11R22.5	XDN	495	500	308	310
12R22.5	XDN	483	484	300	300
11R24.5	XDN	473	475	294	294
225/70R19.5	XZT	641	650	398	400
245/70R19.5	XZT	619	624	385	392
265/70R19.5	XZT	603	612	375	381
285/70R19.5	XZT	587	588	365	366
11R22.5	XT-1	501	510	311	312
275/80R22.5	XT-1	516	520	321	326
11R24.5	XT-1	483	484	300	300
275/80R24.5	XT-1	501	510	311	312
7.50R15	XTA	688	700	428	433
8.25R15	XTA	633	637	393	400
10.00R15	XTA	579	588	360	366
9R17.5	XTA	627	637	390	392
10R17.5	XTA	615	624	382	392
215/75R17.5	XTA	679	686	422	424
285/70R19.5	XTA	595	600	370	381
245/70R17.5	Energy XTA	670	676	416	416
265/70R19.5	Energy XTA	612	612	380	381
245/70R19.5	XZE	619	624	385	392
245/70R19.5	XZE	619	624	385	392
9R22.5	XZE	543	546	337	343
10R22.5	XZE	517	520	321	326
11R22.5	XZE	501	510	311	312
11R22.5	XZE (note: 5)	501	510	311	312
12R22.5	XZE (note: 5)	486	490	302	306
235/80R22.5	XZE	554	572	344	350

V **R** VEEDER-ROOT HUBODOMETER APPLICATIONS GUIDE

MICHELIN Continued

RPM= Revolutions per Mile
RPK= Revolutions per Kilometer

SIZE	TREAD	NEW TIRE RPM	RECOMMENDED RPM HUBO	NEW TIRE RPK	RECOMMENDED RPK HUBO
255/80R22.5	XZE	538	539	334	343
255/70R22.5	XZE *	565	572	351	359
275/80R22.5	XZE	518	520	322	326
11R24.5	XZE	478	484	297	300
11R24.5	XZE *	478	484	297	300
275/80R24.5	XZE	508	510	316	316
215/75R17.5	XZE1	682	686	424	424
215/75R17.5	XDE1	679	686	422	424
9.00R20	XZA	520	520	323	326
10.00R20	XZA	501	510	311	312
11.00R20	XZA	487	490	303	306
12.00R20	XZA	471	475	293	294
215/75R17.5	XZA	685	686	426	433
225/70R19.5	XZA	646	650	401	416
265/70R19.5	XZA	607	612	377	381
285/70R19.5	XZA	594	600	369	381
305/70R19.5	XZA	575	588	357	359
365/80R20	XZA	479	484	298	300
295/80R22.5	XZA	500	500	311	312
255/70R22.5	XZA	566	572	352	359
305/75R24.5 (2)	XZA	483	484	300	300
8.5R17.5	XZA	658	676	409	416
8R19.5	XZA	616	624	383	392
11R22.5	XDHT	500	500	311	312
275/80R22.5	XDHT	510	510	317	326
11R24.5	XDHT	472	475	293	294
275/80R24.5	XDHT	500	500	311	312
9.00R20	XM+S4	517	520	321	326
10.00R20	XM+S4	501	510	311	312
9R22.5	XM+S4	547	550	340	343
10R22.5	XM+S4	517	520	321	326
11R22.5	XM+S4	499	500	310	310
275/80R22.5	XM+S4	514	514	319	326
11R24.5	XM+S4	475	475	295	300
235/80R22.5	XDU	554	572	344	350
255/80R22.5	XDU	540	546	336	343

V R VEEDER-ROOT HUBODOMETER APPLICATIONS GUIDE

MICHELIN Continued

RPM= Revolutions per Mile
RPK= Revolutions per Kilometer

SIZE	TREAD	NEW TIRE RPM	RECOMMENDED RPM HUBO	NEW TIRE RPK	RECOMMENDED RPK HUBO
11R22.5	XZU	497	500	309	310
12R22.5	XZU2	484	484	301	306
275/70R22.5	XZU	542	546	337	343
305/70R22.5	XZU2	526	539	327	333
11R22.5	XZY-1	497	500	309	310
12R22.5	XZY-1	487	490	303	306
315/80R22.5	XZY-1	489	490	304	306
11R24.5	XZY-1	474	475	295	300
12R24.5	XZY-1	461	465	287	294
8.25R20	XZY	544	546	338	343
10.00R20	XZY	497	500	309	310
11.00R20	XZY	485	490	301	306
12.00R20	XZY	467	468	290	294
365/80R20 (2)	XZY	478	484	297	300
11.00R22	XZY	462	465	287	294
11.00R24	XZY	443	450	275	294
12.00R24	XZY	431	433	268	273
445/65R19.5	XZY	491	494	305	306
385/65R22.5	XZY	492	494	306	306
425/65R22.5	XZY	468	468	291	294
445/65R22.5	XZY	457	465	284	294
14.00R20 (G20)	XZA4	427	433	265	273
445/65R22.5	XZL	453	465	282	294
11R22.5	XDY-1	493	494	306	306
315/80R22.5	XDY	483	484	300	300
11R24.5	XDY-1	469	475	291	294
12R24.5	XDY-1	458	465	285	294
11R22.5	XDE A/T	494	494	307	310
12R22.5	XDE A/T	486	490	302	306
11R24.5	XDE A/T	470	475	292	294
10.00R20	XDL	489	490	304	306
12.00R24 (2)	XDL	422	424	262	273

V **R** VEEDER-ROOT HUBODOMETER APPLICATIONS GUIDE

TOYO TIRE CORP.

RPM= Revolutions per Mile
RPK= Revolutions per Kilometer

SIZE	TREAD	NEW TIRE RPM	RECOMMENDED RPM HUBO	NEW TIRE RPK	RECOMMENDED RPK HUBO
8R19.5	M-120Z	616	624	383	392
9R22.5	M-120Z	544	546	338	343
10R22.5	M-120Z	520	520	323	326
11R22.5	M-120Z	502	510	312	312
11R24.5	M-120Z	479	484	298	300
255/70R22.5	M-120Z	568	572	353	359
295/75R22.5	M-120Z	519	520	323	326
295/75R22.5	M1147	517	520	321	326
285/75R24.5	M1147	501	510	311	312
11R22.5	M1147	501	510	311	312
11R24.5	M1147	478	484	297	300
295/75R22.5	M-124Z All Steel	516	520	321	326
285/75R24.5	M-124Z All Steel	501	510	311	312
11R22.5	M-124Z All Steel	501	510	311	312
11R24.5	M-124Z All Steel	478	484	297	300
265/75R22.5	M-124Z All Steel	541	546	336	343
245/75R22.5	M-124Z All Steel	559	572	347	350
1000R20	M-124Z All Steel	501	510	311	312
1000R20	M-604	498	500	310	310
900R20	M-91	521	525	324	326
275/70R225	M102-Z	549	550	341	343
825R20	M-87	545	546	339	343
900R20	M-87	521	525	324	326
1100R20	M-87	486	490	302	306
1200R20	M-87	472	475	293	294
9R22.5	M-87	545	546	339	343
215/75R17.5	M-109Z	677	686	421	424
295/75R22.5	M-101Z	522	525	324	326
11R22.5	M-101Z	506	510	314	316
285/75R24.5	M-101Z	506	510	314	316
11R24.5	M-101Z	483	484	300	306
825R15	M-74	628	637	390	392
1000R15	M-74	579	588	366	
215/75R17.5	M-1090Z	679	686	422	424

**V
R VEEDER-ROOT HUBODOMETER APPLICATIONS GUIDE**

TOYO Continued

RPM= Revolutions per Mile
RPK= Revolutions per Kilometer

SIZE	TREAD	NEW TIRE RPM	RECOMMENDED RPM HUBO	NEW TIRE RPK	RECOMMENDED RPK HUBO
235/75R17.5	M-1090Z	656	676	408	416
11R22.5	M-610Z	494	494	307	310
11R24.5	M-610Z	471	475	293	294
295/75R22.5	M-610ZL	510	510	317	326
285/75R24.5	M-610ZL	494	494	307	310
11R22.5	M-610ZL	494	494	307	310
11R24.5	M-610ZL	471	475	293	294
11R22.5	M-315Z	499	500	310	312
11R24.5	M-315Z	476	484	296	300
1100R22	M61	465	468	289	294
1200R20	M61	470	475	292	294
12R22.5	M61	486	490	302	306
13R22.5	M61	470	475	292	294
1000R20	M61L	502	510	312	312
255/70R22.5	M-614Z	563	572	350	350
9R22.5	M-60	542	546	337	343
245/70R19.5	M608Z	624	624	388	392
215/75R17.5	M608Z	675	676	420	424
295/75R22.5	M615Z	511	514	318	326
285/75R24.5	M615Z	494	494	307	310
11R22.5	M615Z	496	500	308	310
11R24.5	M615Z	472	475	293	294
11R22.5	M615Z	494	494	307	310
295/75R22.5	M615Z	509	510	316	316
285/75R24.5	M615Z	494	494	307	310
11R22.5	M-503Z	494	494	307	310
11R24.5	M-503Z	472	475	293	294
11R22.5	M-506Z	491	494	305	306
11R24.5	M-506Z	469	475	291	294
1000R20	M-56A	492	494	306	306
1000R22	M-56A	468	468	291	294

V **R** VEEDER-ROOT HUBODOMETER APPLICATIONS GUIDE

TOYO Continued

RPM= Revolutions per Mile
RPK= Revolutions per Kilometer

SIZE	TREAD	NEW TIRE RPM	RECOMMENDED RPM HUBO	NEW TIRE RPK	RECOMMENDED RPK HUBO
385/65R22.5	M-314Z	491	494	305	306
13/80R20	M-70	502	510	312	312
14/80R20	M-70	483	484	300	300
245/70R19.5	M-75Z	629	637	391	392
265/70R19.5	M-75Z	607	612	377	381
285/70R19.5	M-75Z	590	600	367	381
12R22.5	M-111Z	488	490	303	306
1100R22	M-111Z	466	468	290	294
315/80R225	M-111Z	489	490	304	306

YOKOHAMA

SIZE	TREAD	NEW TIRE RPM	RECOMMENDED RPM HUBO	NEW TIRE RPK	RECOMMENDED RPK HUBO
295/75R22.5	RY237	520	520	323	326
285/75R24.5	RY237	503	510	313	316
11R24.5	RY237	480	484	298	300
11R22.5	RY237	505	510	314	316
295/75R22.5	TY517	512	514	318	326
285/75R24.5	TY517	496	500	308	310
11R22.5	TY517	473	475	294	294
11R24.5	TY517	497	500	309	310
295/75R22.5	RY083A	520	520	323	326
285/75R24.5	RY083A				
295/75R22.5	RY112				
285/75R24.5	RY112				
295/75R22.5	TY303	513	514	319	326
285/75R24.5	TY303	496	500	308	310
7.50R15FRT	Y785R	698	700	434	441
8.25R15 TR	Y785R	631	637	392	392
10.00R15 TR	Y785R	577	588	359	359
8.25R20	Y785R	548	550	341	343
9.00R20	Y785R	522	525	324	326

V **R** VEEDER-ROOT HUBODOMETER APPLICATIONS GUIDE

YOKOHAMA Continued

RPM= Revolutions per Mile
RPK= Revolutions per Kilometer

SIZE	TREAD	NEW TIRE RPM	RECOMMENDED RPM HUBO	NEW TIRE RPK	RECOMMENDED RPK HUBO
10.00R20	Y785R	507	510	315	316
10.00R22	Y785R	483	484	300	300
11.00R20	Y785R	493	494	306	306
12.00R20	Y785R	475	475	295	300
13/80R20	Y785R	507	510	315	316
14/80R20	Y785R	489	490	304	306
9R17.5 C	Y785R	635	637	395	400
10R17.5	Y785R	616	624	383	392
11R17.5 HC	Y785R	577	588	359	359
9R22.5	Y785R	547	550	340	343
10R22.5	Y785R	520	520	323	326
11R22.5	Y785R	506	510	314	316
11R24.5	Y785R	482	484	300	300
12R22.5	Y785R	493	494	306	306
10.00R20	RY083	504	510	313	316
10.00R22	RY083	480	484	298	300
11R22.5	RY083	504	510	313	316
295/75R22.5	RY083A	520	520	323	326
285/75R24.5	RY083A	503	510	313	316
11R22.5	RY083A	504	510	313	316
11R24.5	RY083A	480	484	298	300
245/75R22.5	RY103	558	572	347	350
265/75R22.5	RY103	541	546	336	343
255/70R22.5	RY103	570	572	354	359
275/70R22.5	RY103	553	572	344	350
275/80R22.5	RY103	524	525	326	326
295/75R22.5	RY103	552	572	343	343
315/80R22.5	RY103	495	500	308	310
275/80R24.5	RY103	504	510	313	316
11R22.5	RY112A	511	514	318	326
11R24.5	RY112A	468	468	291	294
295/75R22.5	RY112A	524	525	326	326
285/75R24.5	RY112A	508	510	316	316
385/65R22.5	RY253	495	500	308	310
425/65R22.5	RY253	473	475	294	294
445/65R22.5	RY253	462	465	287	294
295/75R22.5	RY513	520	520	323	326
285/75R24.5	RY513	503	510	313	316
11R22.5	RY513	504	510	313	316

V **R** VEEDER-ROOT HUBODOMETER APPLICATIONS GUIDE

YOKOHAMA Continued

RPM= Revolutions per Mile
RPK= Revolutions per Kilometer

SIZE	TREAD	NEW TIRE RPM	RECOMMENDED RPM HUBO	NEW TIRE RPK	RECOMMENDED RPK HUBO
11R24.5	RY513	480	484	298	300
215/75R17.5	TY303	684	686	425	433
295/75R22.5	TY303	513	514	319	326
285/75R24.5	TY303	496	500	308	310
11R22.5	TY303	497	500	309	310
11R24.5	TY303	474	475	295	300
225/70R19.5	TY303	654	676	406	416
265/70R19.5	TY303	607	612	377	381
285/70R19.5	TY303	591	600	367	366
255/70R22.5	TY303	563	572	350	350
11R22.5	TY303	497	500	309	310
11R24.5	TY303	474	475	295	300
225/70R19.5	RY023	654	676	406	416
245/70R19.5	RY023	627	637	390	392
265/70R19.5	RY023	612	612	380	381
285/70R19.5	RY023	597	600	371	381
11R22.5	RY023	504	510	313	316
11R24.5	RY023	480	484	298	300
295/75R22.5	RY023	520	520	323	326
295/75R24.5	RY023	503	510	313	316
8.25R20	Y713B	541	546	336	343
9.00R20	Y713B	519	520	323	326
10.00R20	Y713B	503	510	313	316
10.00R22	Y713B	479	484	298	300
11.00R20	Y713B	487	490	303	306
11.00R22	Y713B	466	468	290	294
9R22.5	Y713B	539	539	335	343
10R22.5	Y713B	519	520	323	326
11R22.5	Y713B	503	510	313	316
12R22.5	Y713B	487	490	303	306
8.25R20	Y793R	543	546	337	343
9.00R20	Y793R	522	525	324	326
10.00R20	Y793R	506	510	314	316
11.00R20	Y793R	490	490	305	306
11.00R22	Y793R	468	468	291	294
10R22.5	Y793R	521	525	324	326
11R22.5	Y793R	505	510	314	316
11R24.5	Y793R	482	484	300	300

V R VEEDER-ROOT HUBODOMETER APPLICATIONS GUIDE

YOKOHAMA Continued

RPM= Revolutions per Mile
RPK= Revolutions per Kilometer

SIZE	TREAD	NEW TIRE RPM	RECOMMENDED RPM HUBO	NEW TIRE RPK	RECOMMENDED RPK HUBO
12R22.5	Y793R	490	490	305	306
9R22.5	Y793R	543	546	337	343
9R22.5	Y793R	543	546	337	343
295/75R22.5	RY123	518	520	322	326
285/75R24.5	RY123	502	510	312	312
11R22.5	TY033	497	500	309	310
11R24.5	TY033	474	475	295	300
295/75R22.5	TY503	510	510	317	326
285/75R24.5	TY503	494	494	307	310
11R22.5	TY503	496	500	308	310
11R24.5	TY503	472	475	293	294
11R22.5	MY507	495	500	308	310
11R24.5	MY507	472	475	293	294
11R22.5	MY507	495	500	308	310
11R24.5	MY507	472	475	293	294
385/65R22.5	MY243	495	500	308	310
425/65R22.5	MY243	473	475	294	294
445/65R22.5	MY243	462	465	287	294
11.00R22	Y710L	463	465	288	294
12.00R24	Y710L	437	441	272	273
9.00R20	Y773	520	520	323	326
10.00R20	Y773	504	510	313	316
10.00R22	Y773	480	484	298	300
11.00R20	Y773	488	490	303	306
11.00R22	Y773	467	468	290	294
12.00R20	Y773	472	475	293	294
12.00R24	Y773	441	441	274	294
10R22.5	Y773	520	520	323	326
11R22.5	Y773	504	510	313	316
11R24.5	Y773	480	484	298	300
12R22.5	Y773	488	490	303	306
315/80R22.5	Y773	492	494	306	306
10.00R20	LY053	494	494	307	310
10.00R22	LY053	471	475	293	294
11R22.5	LY053	494	494	307	310
11R24.5	LY053	471	475	293	294

