



RINGFEDER

Safety Bulletin SBRF 251125

Tow Coupling – Inspection and Maintenance Advisory

Issued by Transpecs New Zealand.

Purpose

This bulletin is issued to remind all operators and workshops of the importance of the correct setup and maintenance of their tow couplings, to ensure safe and reliable operation.

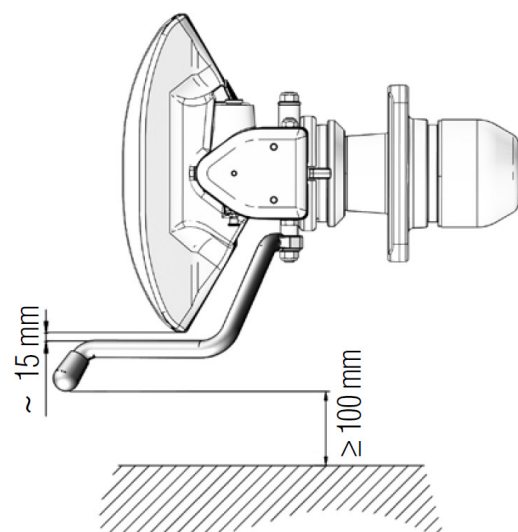
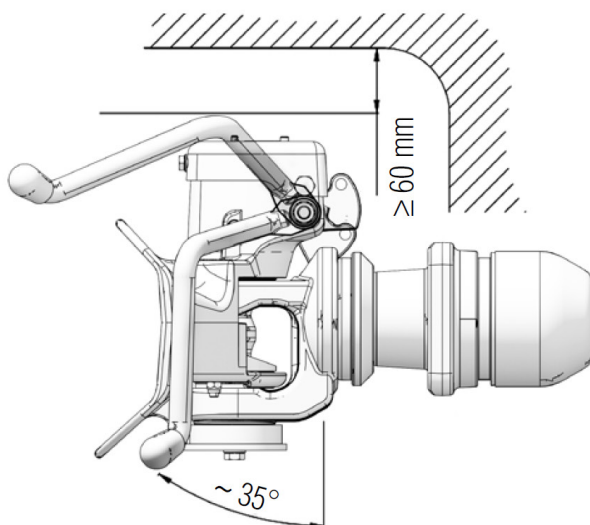
Background

Following a truck and trailer decoupling incident involving an RF50BNZ coupling, incorrect release handle placement was found to be at fault.

Recommended Actions

1. Inspect Handle Position

- Confirm the handle is free to operate and there is no interference preventing its full movement.
- The installation manual recommends a minimum clearance 60mm above and 100mm to the side in both open and closed position.
- Any modification compromises the integrity of the locking system and is strictly prohibited.

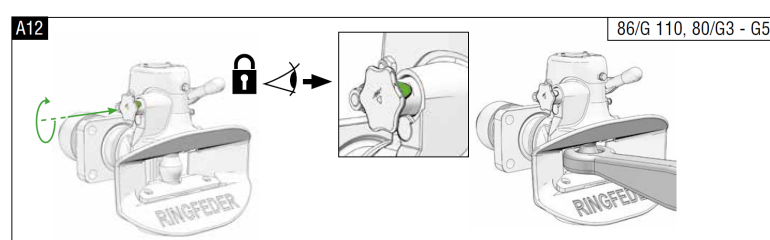
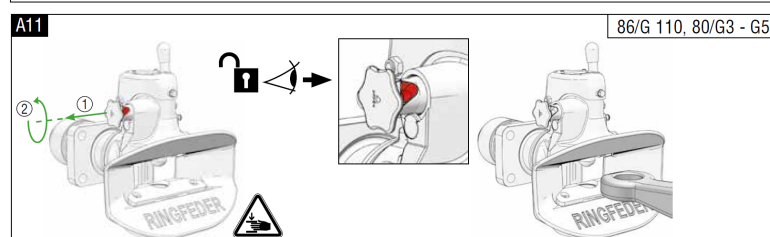
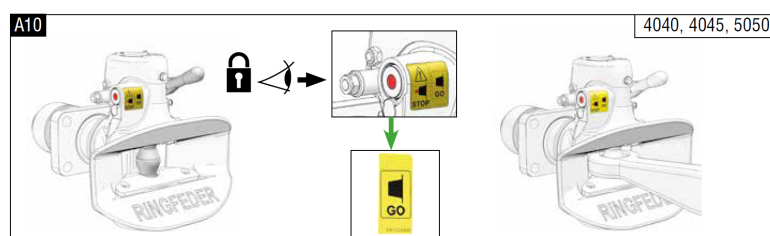
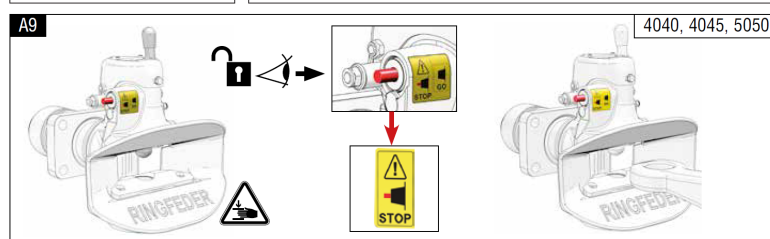
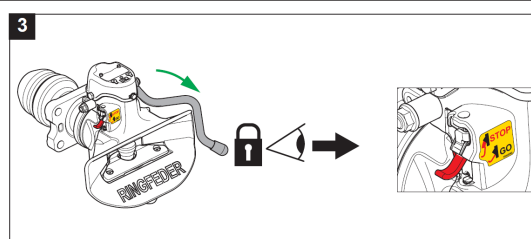
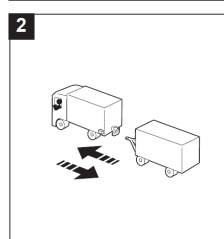
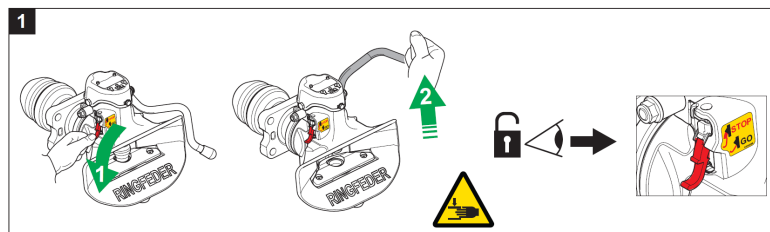


Safety Bulletin SBRF 251125

Tow Coupling – Inspection and Maintenance Advisory

2. Always Verify Coupling Bolt Engagement

- Ensure the manual secondary or automatic safety device confirms the coupling is fully closed and the primary locking mechanism is engaged.
- If the secondary safety device shows as the coupling is open, do not use the coupling until the fault has been eliminated and the device shows the coupling is closed.
- Towing with the bolt not closed correctly, will lead to a connection failure.



3. Perform Regular Maintenance

- Clean, lubricate and inspect the coupling regularly.
- Ensure the bottom bush area is free from dirt and the bolt seats correctly.
- Look for signs of wear, rubbing marks, or interference with adjacent components (e.g., EBS plug).

Please check www.ringfeder-fr.com/en-nz for full maintenance and installation instructions.

For further assistance with this bulletin, check the Transpecs website or contact us on 09 980 7300.