

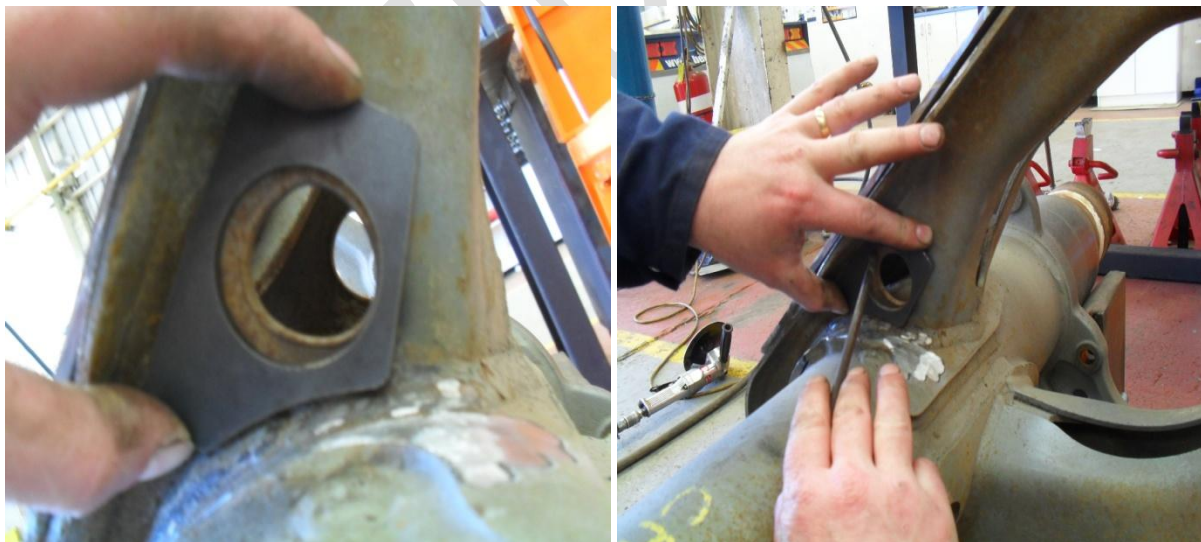
# SAF-HOLLAND INTRA SUSPENSION SHOCK-MOUNT REPAIR

STEP 1: REMOVE SHOCK ABSORBER FROM TRAILING ARM.

STEP 2: CUT AND REMOVE SIDE REINFORCEMENT PLATE AS SHOWN BELOW



STEP 3: USE SIDE REINFORCEMENT PLATE AS SHOWN BELOW AS A TEMPLATE TO SCRIBE AND CUT OUT LARGER HOLE.



STEP 4: BARREL GRIND HOLE TO SCRIBED DIAMETER OR YOU CAN USE OXY ACCELENE EQUIPMENT TO REMOVE THE MAJORITY OF MATERIAL. FINISH DIAMETER BY GRINDER.

COMPLETE STEPS 3&4 TO OPPOSITE SIDE OF TRAILING ARM

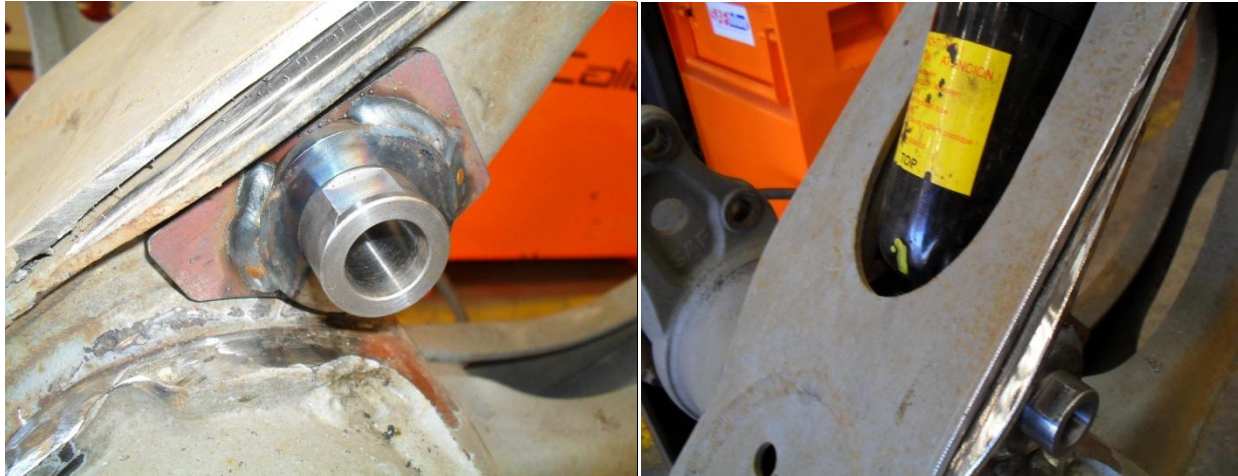


STEP 5: INSERT BOSS INTO SIDE PLATES AND WELD AS SHOWN





STEP 6: PLACE SHOCK MOUNT BOSS IN TRAILING ARM, ON BOTH SIDES AND INSTALL SMALLER BUSHES.  
REINSTALL SHOCKABSOBER AND BOLT. AS SHOWN BELOW



STEP 7: TACK WELD SIDE PLATES BEFORE WELDING TO AXLE ADAPTER (bottom) AND TRAILING ARM TOP PLATE (upper).



STEP 8: ENSURE SHOCKABSORBER IS POSITIONED CENTRALLY, TACK WELD KEYS IN POSITION ALLOWING INNER BUSH TO CLAMP ON SHOCK BUSH.

