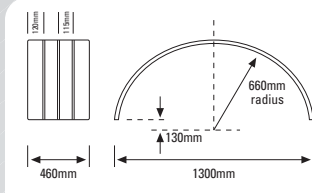
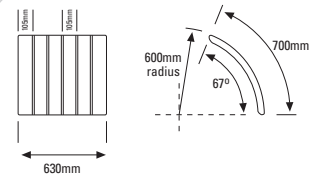


**Lelox High Quality Stainless Steel & Aluminium Mudguards & Mounting Accessories**



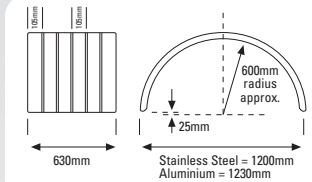
**Super Single Mudguard**  
Steel Reinforced Edge

Part No.	Description:
SS11SSNR	Stainless Steel, 1.1mm, Bright, 8.8kg
AM16SSNR	Aluminium, 1.6mm, Mill/Matt, 5.3kg



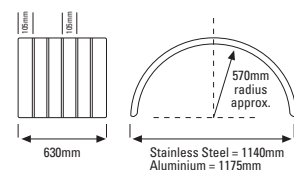
**Quarter Mudguard**  
Curved edge, standard

Part No.	Description:
SS11QTSC	Stainless Steel, 1.1mm, Bright, 4.0kg



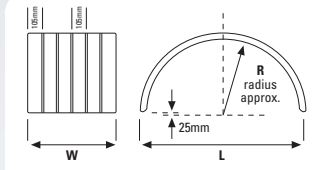
**Single Mudguard**  
Curved edge

Part No.	Description:
SS11SINC	Stainless Steel, 1.1mm, Bright, 10.2kg
AM16SINC	Aluminium, 1.6mm, Mill/Matt, 5.3kg



**Single Mudguard**  
Curved edge, low profile

Part No.	Description:
SS11SLPC	Stainless Steel, 1.1mm, Bright, 10.2kg
AM16SLPC	Aluminium, 1.6mm, Mill/Matt, 5.3kg



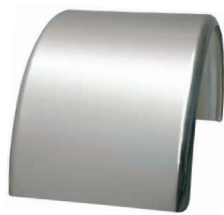
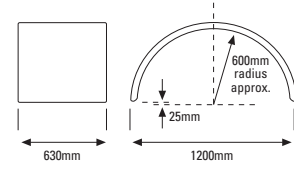
PART NO.	W	L	R
SS11SINR	630	1200	600
AM16SINR	630	1200	600
SS11S195	630	1080	540

**Single Mudguard**  
Steel Reinforced Edge

PART NO.	W	L	R
SS11SLPR16	490	1000	500
AM16SLPR16	490	1000	500

Part No.	Description:
SS11SLPR16	Stainless, 1.1mm, Bright, 8.4kg
SS11SINR	Stainless, 1.1mm, Bright, 11.5kg
AM16SLPR16	Alum, 1.6mm, Mill/Matt, 5.0kg
SS11S195	Stainless, 1.1mm, Bright, 11.5kg
AM16SINR	Alum, 1.6mm, Mill/Matt, 6.7kg



**No Groove Mudguard**

Part No.	Description:
SS11SINCNG	Stainless Steel, 1.1mm, no grooves



**Mount Bracket**  
Cast aluminium bracket

Part No.	Description:
MMAB	Mounting for Lelox metal guards. Includes wide backplate, dampeners, nuts, bolts & washers.
MMAB-POL	Polished Cast Aluminium

**Chassis Pipes**  
Aluminium / Stainless Steel



Part No.	Description:
OSCP	Offset Chassis Pipe
OSCP-2	Offset Chassis Pipe Zinc
STCP	Straight Chassis Pipe
OSCPSS	Stainless Offset Chassis Pipe



**Loop Kit**

Part No.	Description:
LKI	Black rubber loop kit, 3.3kg for full kits. 2 Flaps, 4 stainless steel strips, nuts, bolts & washers.