

ADAPTORS & FLANGES



Adaptors & Flanges

Product:	Part No.	Description:	Page:
	114-000-10604	UNI - UNI	9-01
	114-000-00615	UNI PTO (3 Holes) / ISO (4 Holes) Pump	9-01
	114-000-00151	UNI PTO / SAE B Pump	9-02
	114-000-00142	UNI PTO / SAE A Pump	9-02
	114-000-00599	UNI PTO / 2P Pump	9-02
	114-000-00071	ISO 4-Hole PTO / UNI 3-Hole Pump	9-03
	114-000-00786	ISO 4-Hole PTO / DIN13 3-Hole Pump	9-03
	114-000-11701	ISO 4-Bolt PTO / SAE B Pump	9-04
	114-000-11756	ISO 4-Bolt PTO / SAE BB Pump	9-04
	114-000-11827	ISO 4-Bolt PTO / SAE C Pump	9-05
	114-000-11809	SAE B PTO / ISO 4-Bolt Mount	9-05
	114-000-11854	SAE B PTO / 13 DIN Bolt Pump	9-06
	114-000-00017	SAE B PTO / UNI Pump	9-06
	114-000-00768	SAE BB PTO / UNI Pump	9-07
	114-000-11818	SAE C PTO / ISO 4-Bolt Pump	9-07
	114-000-00082	DANA PTO / UNI Pump	9-08
	114-000-00375	POWAUTO PTO / UNI Pump	9-08
	114-000-00384	POWAUTO PTO / DIN 13 Pump	9-08
Drive Shafts	Spicer 1120		9-09
	Spicer 1300		9-09
Flanges	114-000-01089	Flanges - Spicer 1120	9-10
	114-000-01098	Flanges - Spicer 1300	9-10
	114-000-01034	Flanges - Type G Special	9-10
	114-000-01070	Flanges - Spicer 1120	9-11
	114-000-01132	Flanges - Spicer 1300	9-11
	114-000-01105	Flanges - Spicer 1300	9-11
	114-000-01016	Flange Kit for PTO Version 13/14 - Spicer 1120 Type G Special	9-12
	114-000-01114	Flange Kit for PTO Version 13/14 - Spicer 1300	9-12
	114-000-01436	Flange Kit for PTO Version 13/14 - DIN 00	9-12
	114-000-01212	Flange Kit for PTO Version 13/14 - DIN 10	9-13
	-	Flange Kit for PTO Version 13/14 - Parts Listings	9-13

OMFB PTO / PUMP ADAPTORS



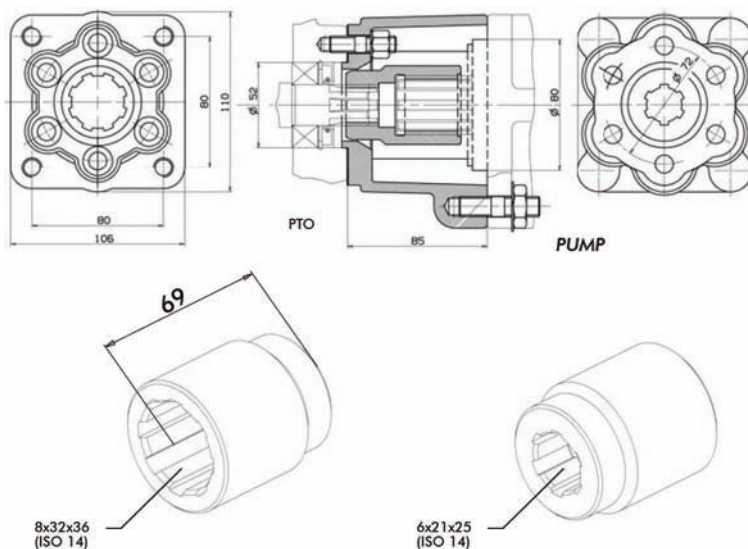
114-000-10604

UNI - UNI



114-000-00615

Adaptor UNI PTO (3 Holes) / ISO (4 Holes) Pump

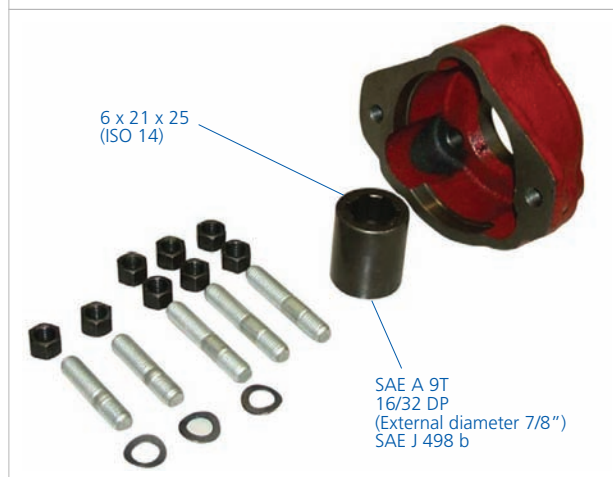
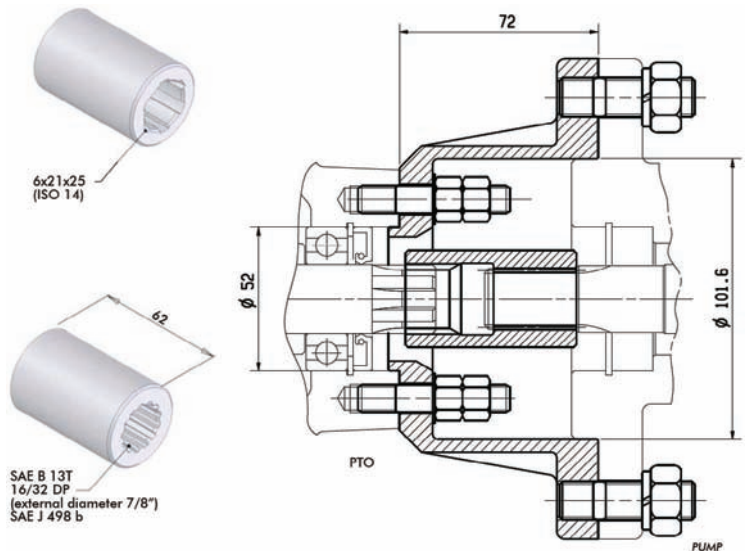


OMFB PTO / PUMP ADAPTORS



114-000-00151

Adaptor UNI PTO / SAE B PUMP



114-000-00142

Adaptor UNI PTO / SAE A PUMP

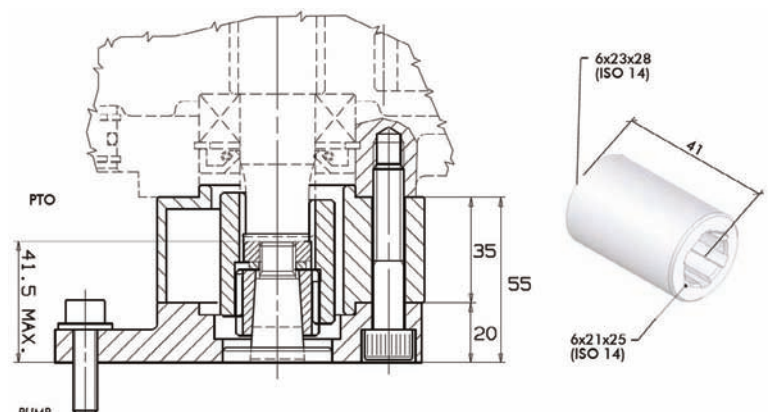
6 x 21 x 25
(ISO 14)

SAE A 9T
16/32 DP
(External diameter 7/8")
SAE J 498 b



114-000-00599

Adaptor UNI PTO / 2P Pump

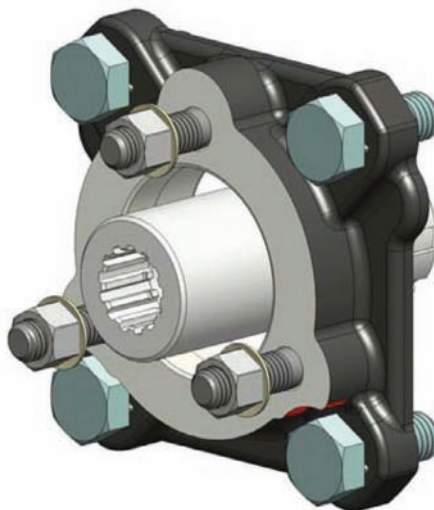
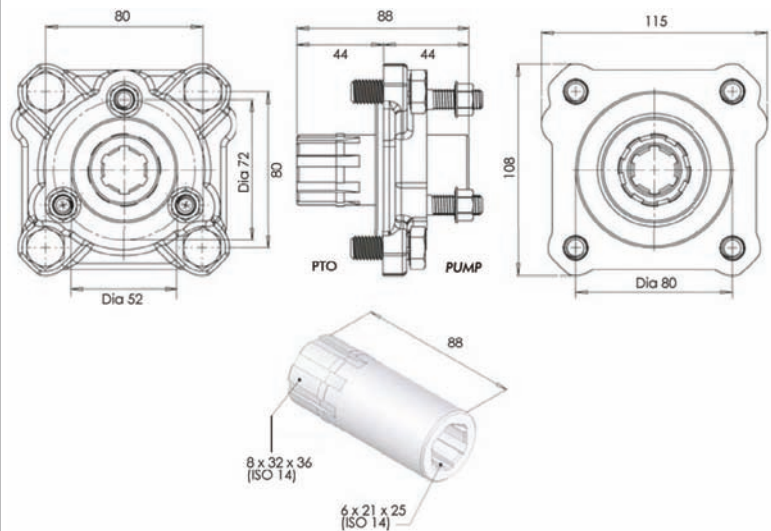


OMFB PTO / PUMP ADAPTORS



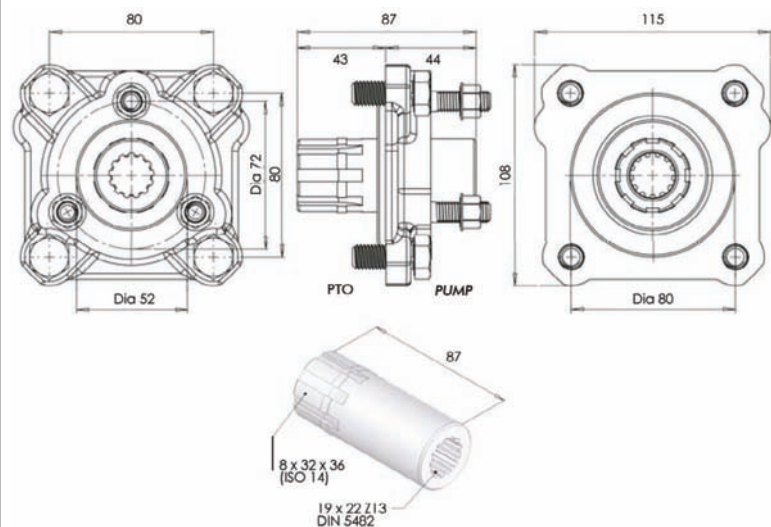
114-000-00071

Adaptor ISO 4-Hole PTO / UNI 3-hole Pump



114-000-00786

Adaptor ISO 4-Hole PTO / DIN13 3-Hole Pump

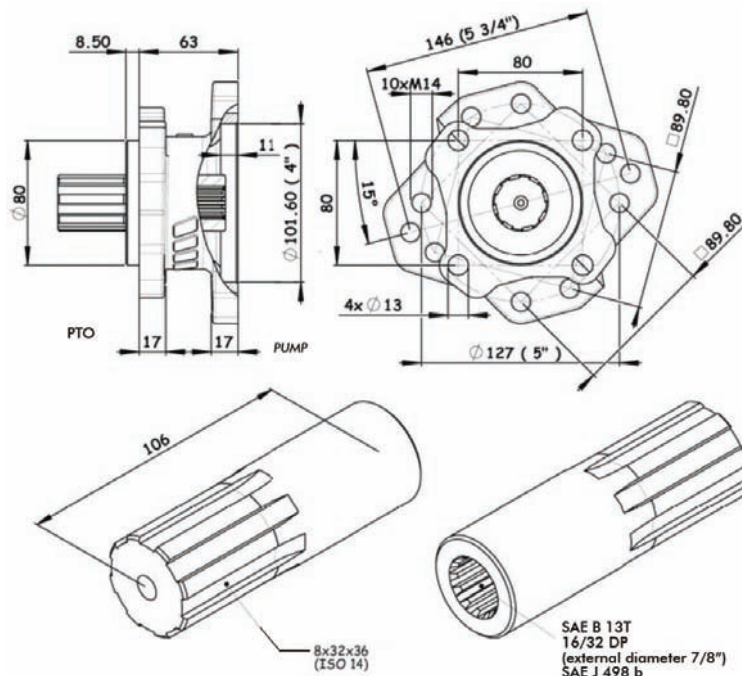


OMFB PTO / PUMP ADAPTORS



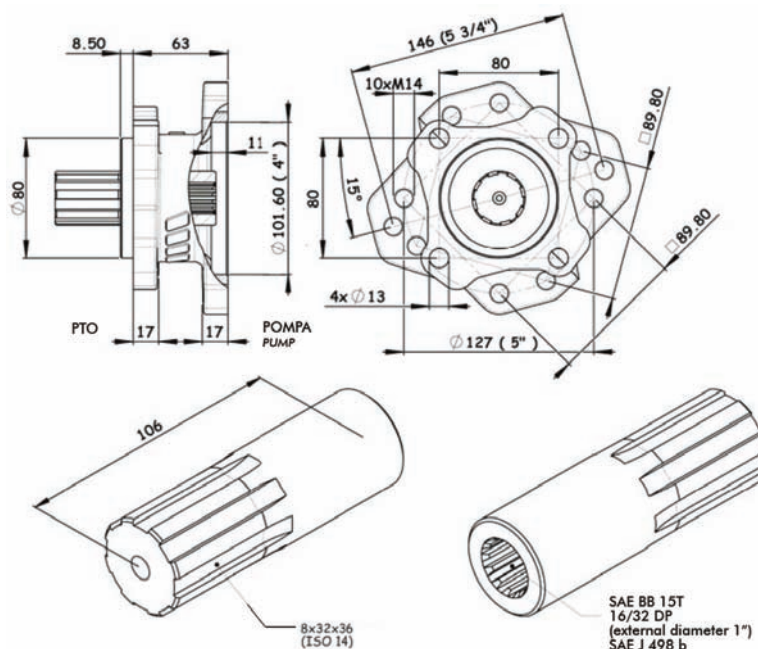
114-000-11701

Adaptor ISO 4 Bolt PTO / SAE B Pump



114-000-11756

Adaptor ISO 4 Bolt PTO / SAE BB Pump

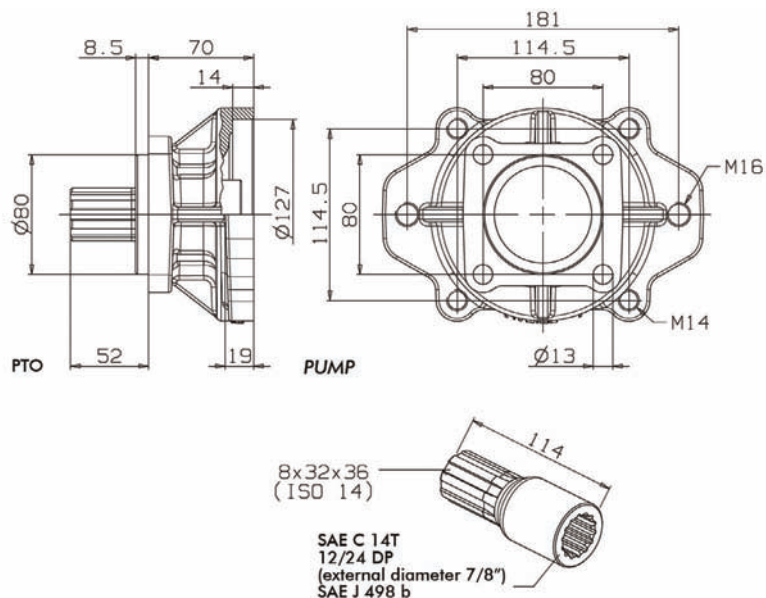


OMFB PTO / PUMP ADAPTORS



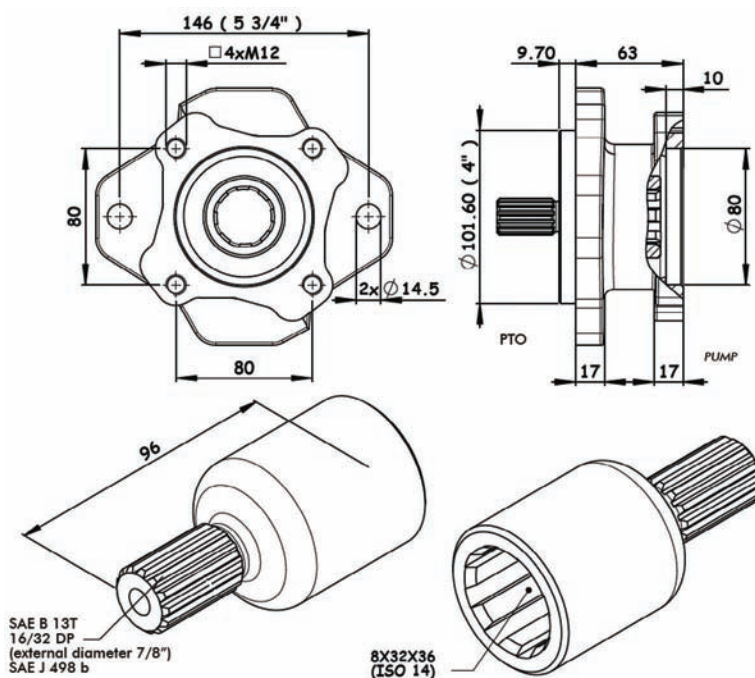
114-000-11827

Adaptor ISO 4 Bolt PTO / SAE C Pump



114-000-11809

Adaptor SAE B PTO / ISO 4 Bolt Mount

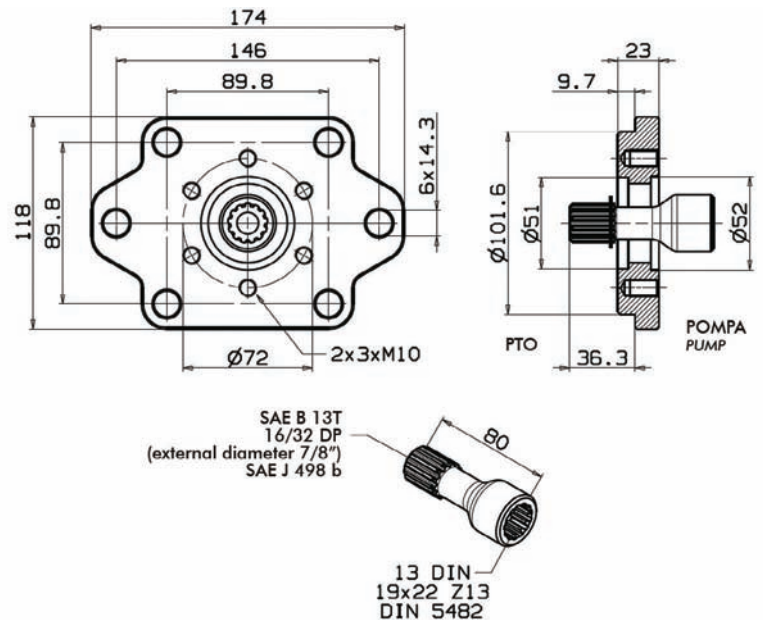


OMFB PTO / PUMP ADAPTORS



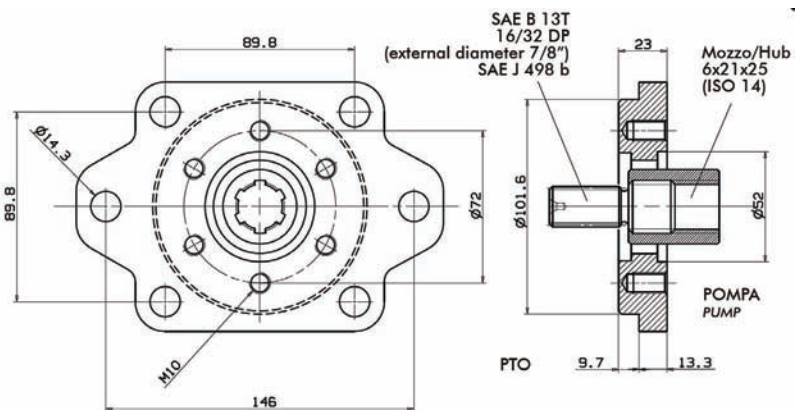
114-000-11854

Adaptor SAE B PTO / 13 DIN Bolt Pump



114-000-00017

Adaptor SAE B PTO / UNI Pump

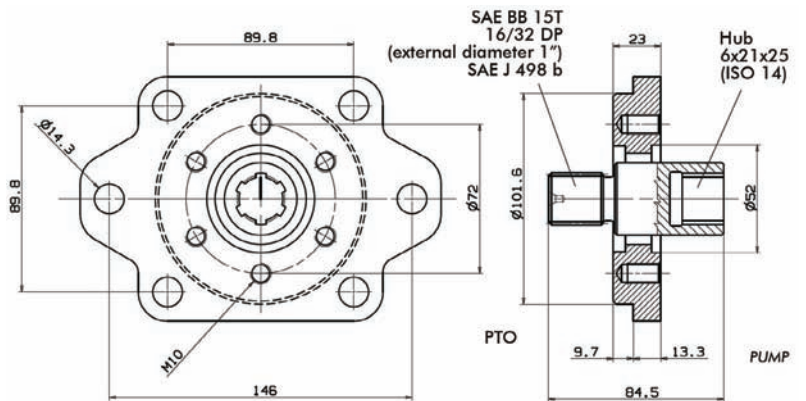


OMFB PTO / PUMP ADAPTORS



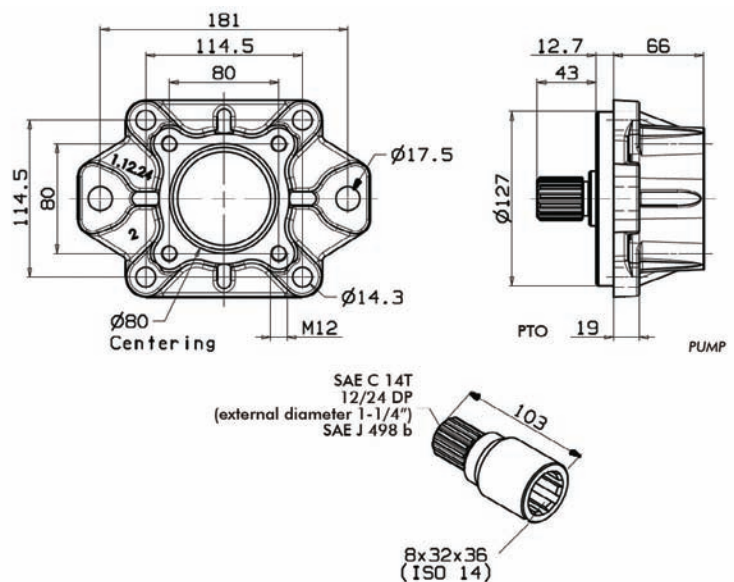
114-000-00768

Adaptor SAE BB PTO / UNI Pump



114-000-11818

Adaptor SAE C PTO / ISO 4 Bolt Pump

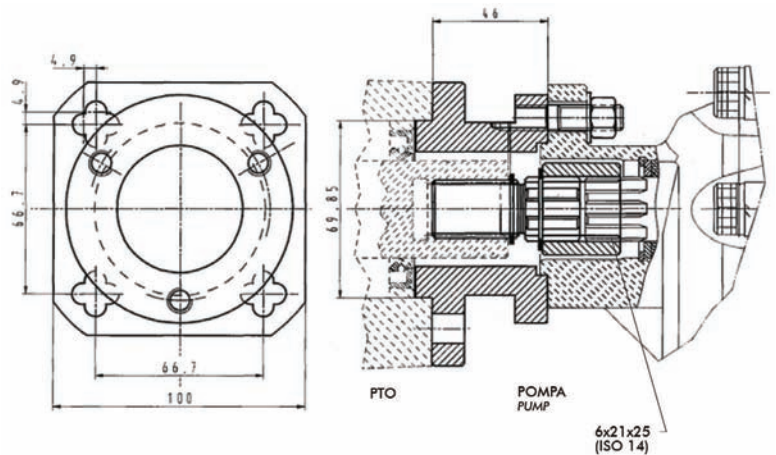


OMFB PTO / PUMP ADAPTORS



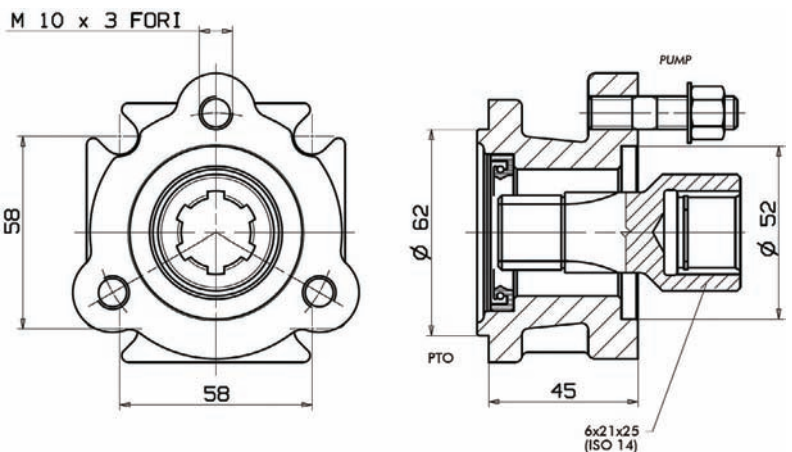
114-000-00080

Adaptor DANA PTO / UNI Pump



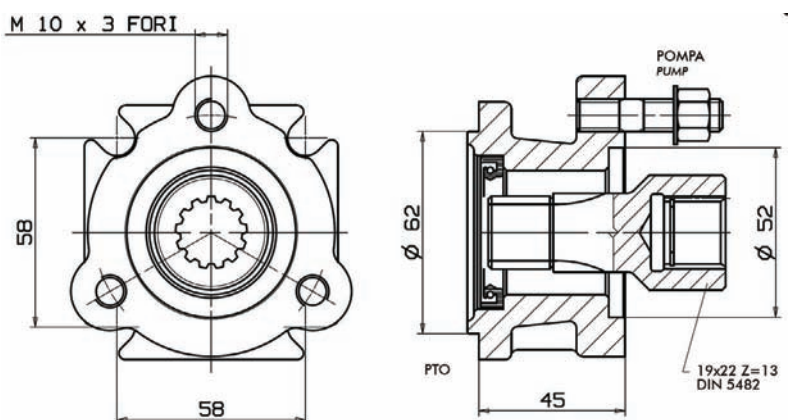
114-000-00375

Adaptor POWAUTO PTO / UNI Pump

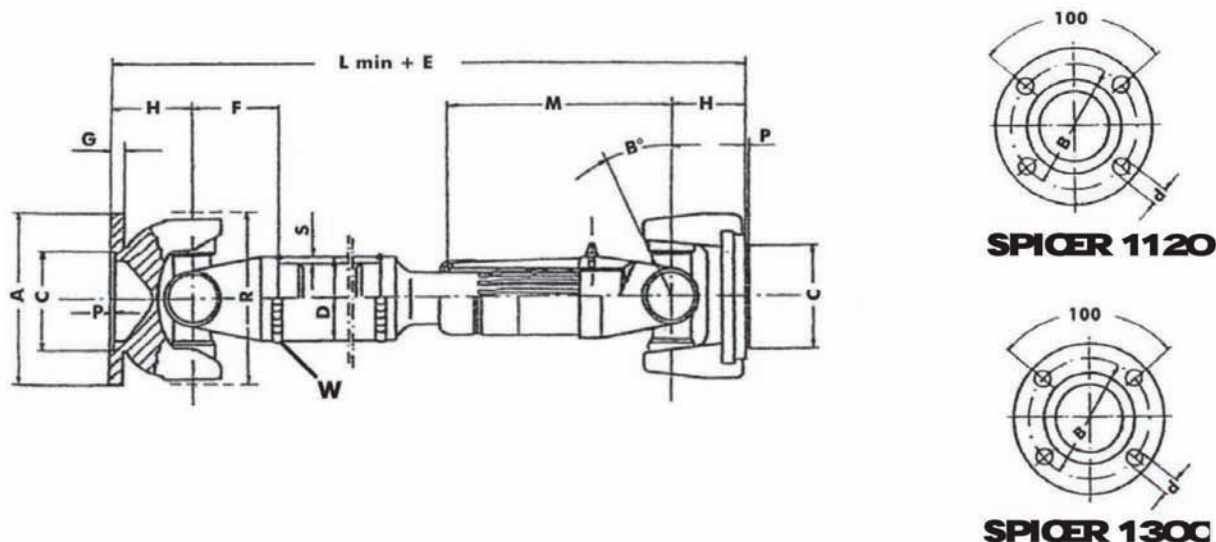


114-000-00384

Adaptor POWAUTO PTO / DIN 13 Pump



The drive shafts are supplied loose and should be welded at the "W" point according to the required length (included between L min and L max). Grease cups are available both on the joint and on the splined shaft.

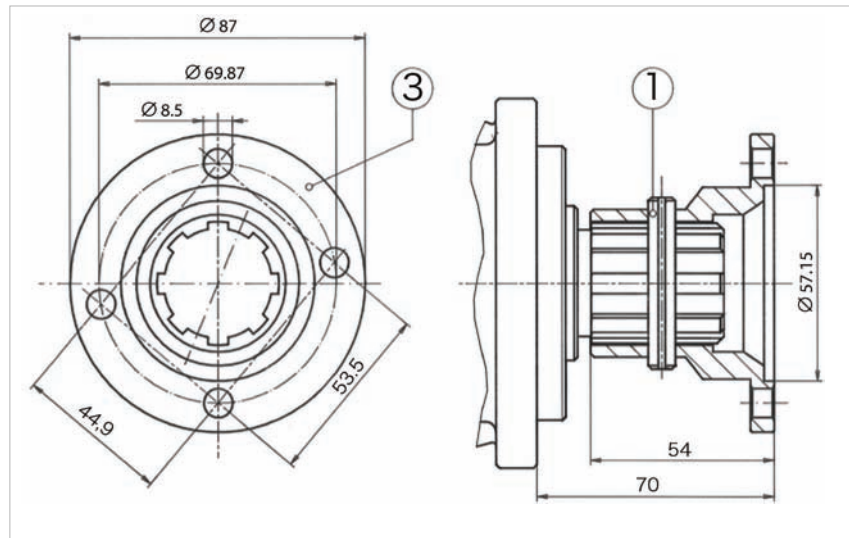


Technical data

Type / Part No.	Max torque* Nm	E mm	D x S mm	F mm	M mm	R mm	Spline
SPICER 1120 114.14.208	900	+ 50	44,5 x 1,7	39	130	77	23 x 27 x 16
SPICER 1300 114.14.217	1800		51 x 2,5	40	137,5	100	30 x 35 x 16

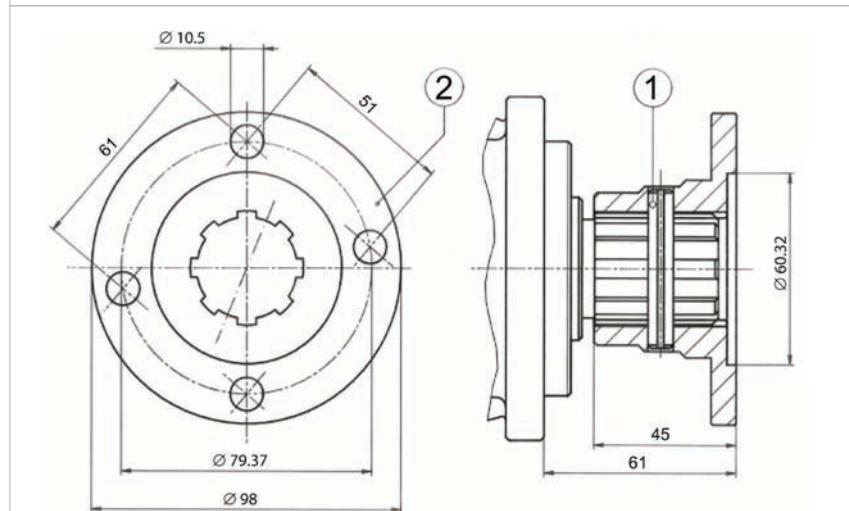
Dimension

Tipo Type	A mm	B mm	C mm	G mm	P mm	d mm	H mm	B° max	L min mm	L max mm
SPICER 1120 114.14.208	87,5	69,85	57,15	7	1,4	8,25	33,5	18°	295	1000
SPICER 1300 114.14.217	96,8	79,37	60,32	8,5	1,4	10,25	43,5	22°	324	



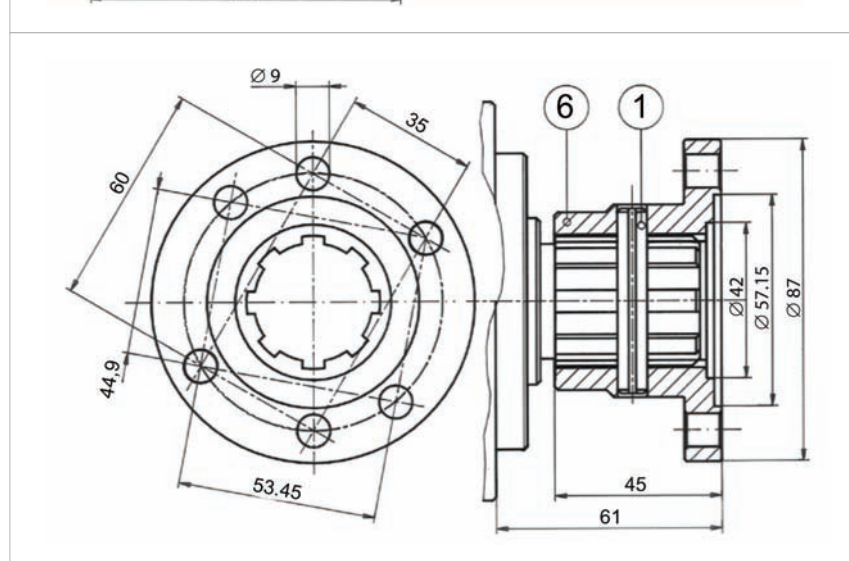
114-000-01089

SPICER 1120



114-000-01098

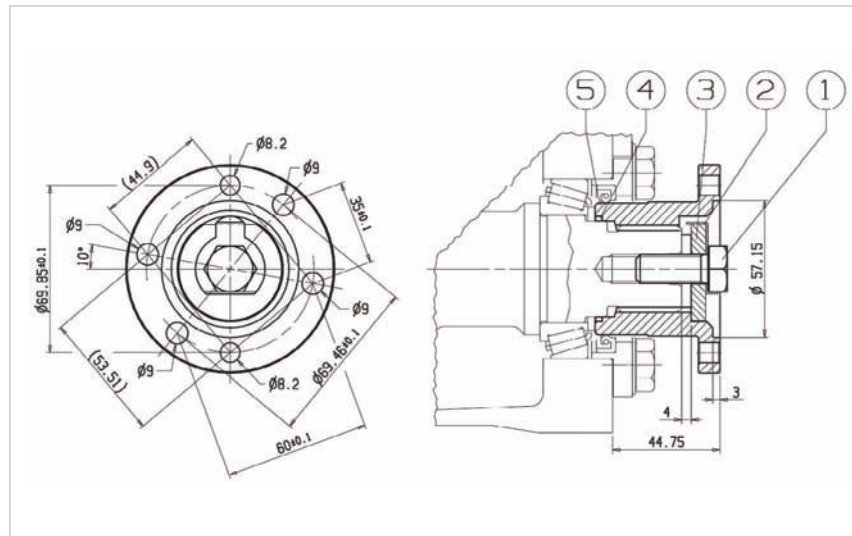
SPICER 1300



114-000-01034

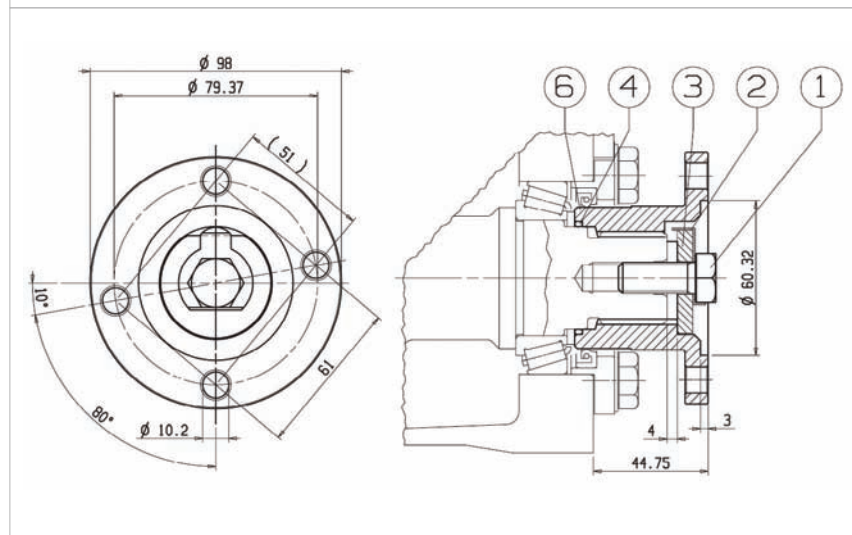
FLANGE TYPE G SPECIAL

Can be used also with Spicer 1120



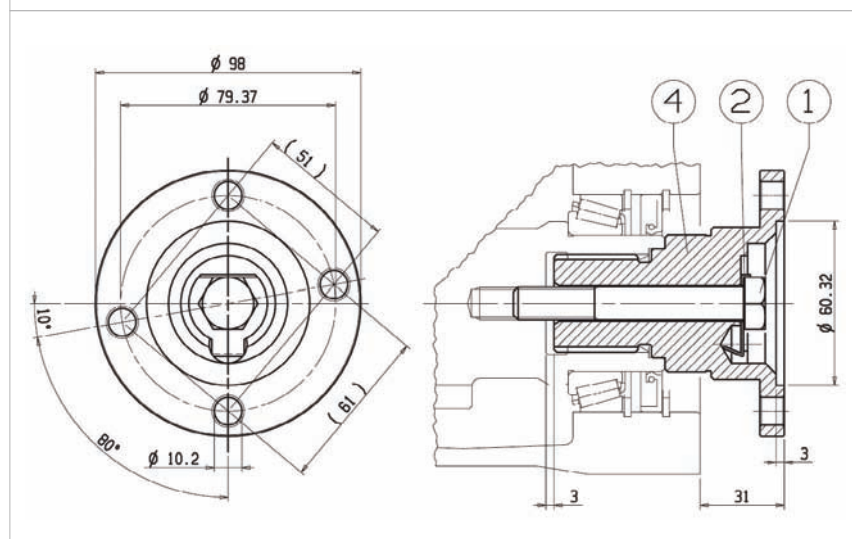
114-000-01070

SPICER 1120



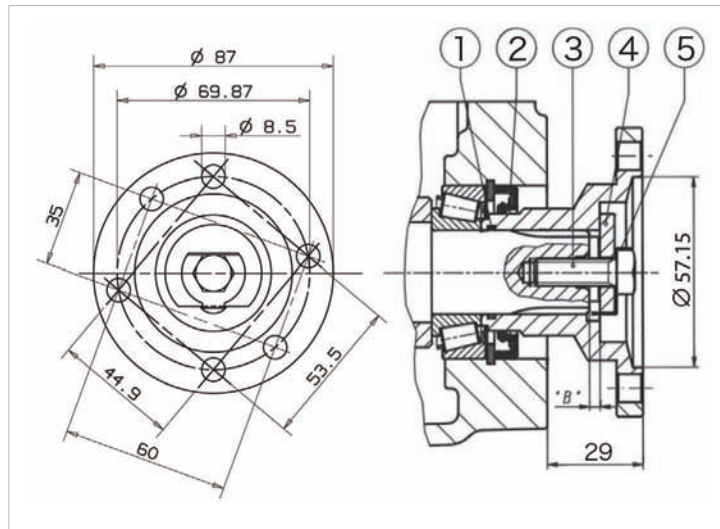
114-000-01132

SPICER 1300



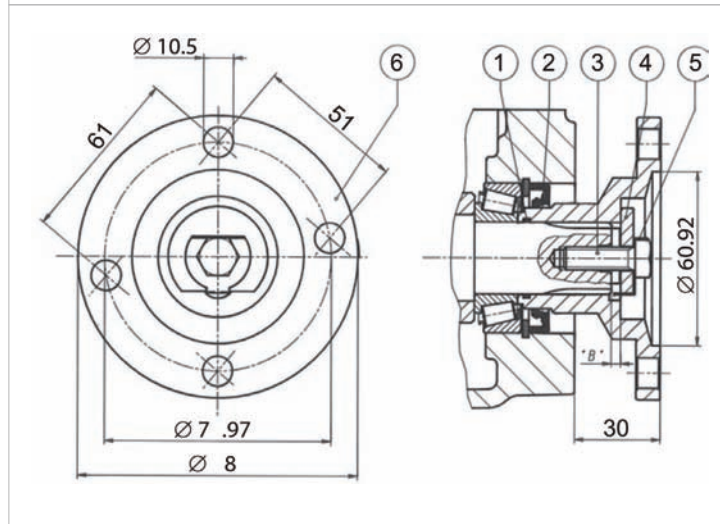
114-000-01105

SPICER 1300



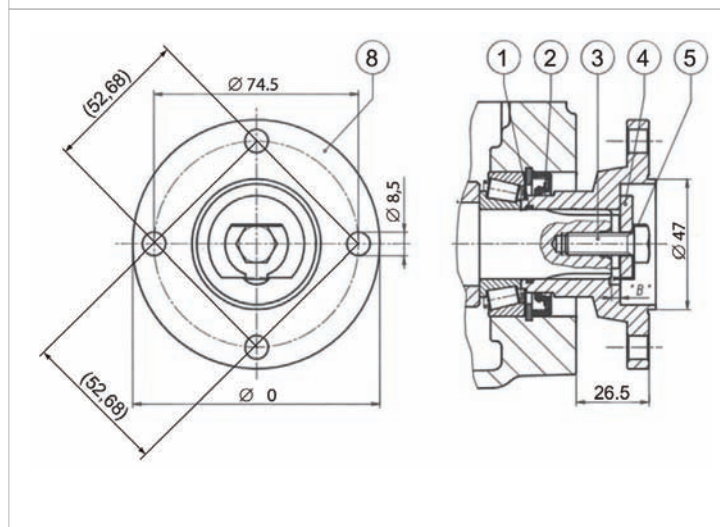
114-000-01016

Spicer 1120 Type G Special



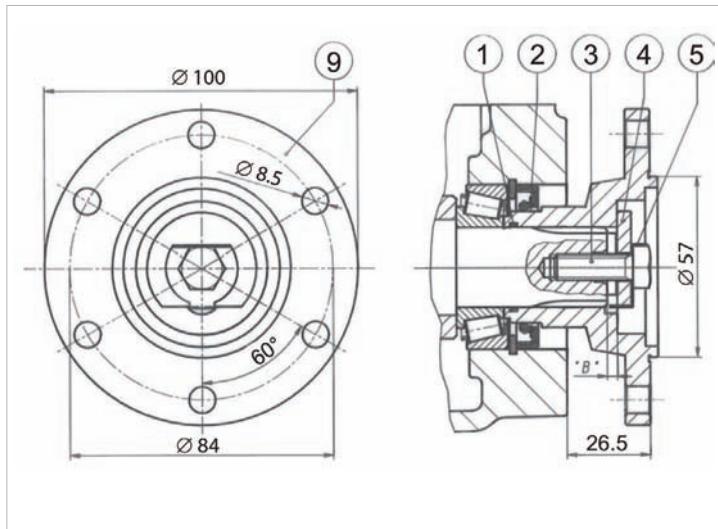
114-000-01114

Spicer 1300



114-000-01436

DIN 00



114-000-01212

DIN 10